

# Small-time asymptotics for basket options - the bi-variate SABR model and the hyperbolic heat kernel on $\mathbb{H}^3$

Martin Forde\*

Hongzhong Zhang<sup>†</sup>

April 21, 2016

## Abstract

We compute a sharp small-time estimate for the price of a basket call under a bi-variate SABR model with both  $\beta$  parameters equal to 1 and three correlation parameters, which extends the work of Bayer, Friz & Laurence [BFL14] for the multivariate Black-Scholes flat vol model. The result follows from the heat kernel on hyperbolic space for  $n = 3$  combined with the Bellaïche [Bel81] heat kernel expansion and Laplace’s method, and we give numerical results which corroborate our asymptotic formulae. Similar to the Black-Scholes case, we find that there is a phase transition from one “most-likely” path to two most-likely paths beyond some critical  $K^*$ .<sup>1</sup>

## 1 Introduction

Basket options (i.e. options on a linear combination of  $n$  assets) are both interesting and difficult to price, in part because there is no closed-form expression for the price of a basket call option even under a simple  $n$ -dimensional flat-vol Black-Scholes model for  $n \geq 2$ , because a sum of independent log-normal random variables is no longer log-normal and does not admit a closed-form density. Recently, Bayer, Friz & Laurence [BFL14] compute a small-time estimate for the density associated with pricing a basket call under a two-dimensional Black-Scholes model using Laplace’s method; somewhat surprisingly, they find that there is “phase-transition” from one “most-likely” value for the two stock price values  $(S_T^1, S_T^2)$  at maturity  $T$ , to *two* most-likely values for this vector.

Gulisashvili & Tankov [GT15] characterize the implied volatility of a basket call option at small and large strikes, in a multi-variate Black-Scholes setting. [GT15] also compute the leading order term for implied volatility when the asset prices follow the multidimensional Black-Scholes model evaluated at an independent time-change, and they also deal with a general model where the dependence between assets is described by a copula. Armstrong et al. [AFLZ14] compute a small-time expansion for implied volatility under a general uncorrelated local-stochastic volatility model using the Bellaïche [Bel81] heat kernel expansion combined with Laplace’s method; they also consider the case when the correlation  $\rho \leq 0$  and in this case the approach still works if the drift of the volatility takes a specific functional form and there is no local volatility component, which includes the SABR model for  $\beta = 1, \rho \leq 0$ .

In this article, we compute the small-time behaviour of a basket call option under a *bi-variate* uncorrelated SABR model with  $\beta$  parameters equal to 1 with three correlation parameters for two correlated assets, and (as for the Black-Scholes case) we find that the same phase transition effect occurs at the same critical strike, i.e. the “rate function” in the exponent of the saddlepoint approximation is qualitatively different for strikes values greater than some critical strike  $K^*$ , where there is a phase transition from one “most-likely” configuration to two most-likely paths. The result follows from the known expression for the hyperbolic heat kernel on the upper half plane  $\mathbb{H}^3$  combined with the Bellaïche small-time heat kernel expansion over compact domains and Laplace’s method (in a similar spirit to [AFLZ14]). We then extend this result to a correlated bivariate SABR model with three correlation parameters.

---

\*Dept. Mathematics, King’s College London, Strand, London, WC2R 2LS (Martin.Forde@kcl.ac.uk)

<sup>†</sup>Dept. Statistics, Columbia University, New York, NY 10027 (hzhong@stat.columbia.edu)

<sup>1</sup>We thank Stefano de Marco and the HAJ for many useful discussions, and Peter Friz for alerting us to the updated book version of [BFL14].

## 2 Background on the heat kernel and hyperbolic space

Consider a diffusion process on  $M = \mathbb{R}^n$  with infinitesimal generator  $L$ . In local coordinates,  $L$  takes the form

$$L = \frac{1}{2} \sum_{1 \leq i, j \leq n} a^{ij}(x) \frac{\partial^2}{\partial x_i \partial x_j} + \sum_{1 \leq i \leq n} b^i(x) \frac{\partial}{\partial x_i}.$$

(see Theorem 2.1 below for the conditions that we impose on  $b, \sigma$  via conditions on  $\mathcal{M}$  and  $\mathcal{A}$ ). Now furnish  $M$  with a Riemannian metric  $g_{ij} = (a_{ij})^{-1}$  so that  $M$  is a smooth Riemannian manifold with a single chart given by the identity map. We can write  $L$  as  $\frac{1}{2}\Delta + \mathcal{A}$ , where  $\Delta = \sum_{i,j} \frac{1}{\sqrt{|g|}} \partial_i (\sqrt{|g|} g^{ij} \partial_j)$  is the Laplace-Beltrami operator and  $\mathcal{A}^i = b^i - \frac{1}{2} \sum_j \frac{1}{\sqrt{|g|}} \partial_j (\sqrt{|g|} g^{ij})$  is a smooth first-order differential operator and  $|g| = |\det g_{ij}|$  (recall that  $g^{ij} = (g_{ij})^{-1}$ ).

Given such an operator  $L$ , the heat kernel  $p(\mathbf{x}; \mathbf{y}, t)$  of  $L$  is the fundamental solution to the heat equation  $\partial_t u = (\mathcal{A} + \frac{1}{2}\Delta)u$ , which is also the transition density of the diffusion  $X$  with respect to the Riemannian volume measure  $\sqrt{|g|}$  (see [Hsu] for more details); to obtain the transition density  $\hat{p}(\mathbf{x}; \mathbf{y}, t)$  of  $X$  with respect to Lebesgue measure  $dx_1 \dots dx_n$ , we set

$$\hat{p}(\mathbf{x}; \mathbf{y}, t) = p(\mathbf{x}; \mathbf{y}, t) \sqrt{g(\mathbf{y})}$$

where  $\sqrt{g}$  is shorthand for  $\sqrt{\det g}$ .

Throughout, we let  $\rho(\mathbf{x}, \mathbf{y})$  denote the Riemannian distance between two points  $\mathbf{x}, \mathbf{y} \in M$ .

**Theorem 2.1** (Theorem 4.1 in [Bel81]). *Let  $M$  be a  $C^4$ -Riemannian manifold and  $\mathcal{A}$  a  $C^4$ -vector field. The heat kernel  $p(\mathbf{x}; \mathbf{y}, t)$  of the operator  $\frac{1}{2}\Delta + \mathcal{A}$  satisfies:*

$$p(\mathbf{x}; \mathbf{y}, t) = (2\pi t)^{-\frac{n}{2}} u_0(\mathbf{x}, \mathbf{y}) e^{-\frac{1}{2}\rho(\mathbf{x}, \mathbf{y})^2/t + A(\mathbf{x}, \mathbf{y})} [1 + o(1)] \quad (t \rightarrow 0) \quad (1)$$

for some function  $u_0(\mathbf{x}, \mathbf{y})$  (see e.g. [Hsu02] or [AFLZ14] for details on how to compute  $u_0(\mathbf{x}, \mathbf{y})$ ), where  $(\mathbf{x}, \mathbf{y}) \in (M \times M) \setminus C(M)^2$ , and

$$A(\mathbf{x}, \mathbf{y}) = \int_0^1 \langle \mathcal{A}, \dot{\gamma}(s) \rangle ds$$

for the unique distance-minimizing geodesic  $\gamma : [0, 1] \rightarrow M$  joining  $\mathbf{x}$  and  $\mathbf{y}$ . The estimate (1) is uniform on compact subsets of  $(M \times M) \setminus C(M)$ .

We know that Theorem 1.1 holds in general. However, when  $M$  is the upper half space  $\mathbb{H}^3 = \{(x, y, a) \in \mathbb{R}^3 : a > 0\}$ , and the metric  $(g_{ij})$  is the Poincaré metric with line element  $ds^2 = \frac{1}{a^2}(dx^2 + dy^2 + da^2)$  and  $\mathcal{A} = 0$ , from e.g. [GM98] we also have the known exact formula:

$$p(\mathbf{x}; \mathbf{y}, t) = \frac{1}{(2\pi t)^{\frac{3}{2}}} \frac{\rho}{\sinh \rho} e^{-\frac{1}{2}t - \frac{\rho^2}{2t}}, \quad (2)$$

where  $\rho$  is shorthand for  $\rho(\mathbf{x}, \mathbf{y})$ . Equating (2) with (1) for  $\mathcal{A} = 0$ , we see that we must have that

$$u_0(\mathbf{x}, \mathbf{y}) = \frac{\rho}{\sinh \rho}$$

for this metric.

---

<sup>2</sup> $C(M)$  is the subset of points  $(\mathbf{x}, \mathbf{y})$  in  $M \times M$  such that  $x$  lies in the cut locus of  $y$

### 3 The bi-variate SABR model - zero correlation case

We work on a model  $(\Omega, \mathcal{F}, \mathbb{P})$  throughout, with a filtration  $\mathcal{F}_t$  supporting three independent Brownian motions which satisfies the usual conditions.

We now consider the following bi-variate SABR model for two asset price processes  $S_t^{(1)}, S_t^{(2)}$ :

$$\begin{cases} dX_t = -\frac{1}{2}a_t^2 dt + a_t dW_t^1, \\ dY_t = -\frac{1}{2}a_t^2 dt + a_t dW_t^2, \\ da_t = a_t dW_t^3 \end{cases} \quad (3)$$

where  $X_t = \log S_t^{(1)}, Y_t = \log S_t^{(2)}$  and  $W^1, W^2, W^3$  are three independent standard Brownian motions and  $a_0 > 0$ . The law of  $(X_t - X_0, Y_t - Y_0)$  is independent of  $(X_0, Y_0)$ , so without loss of generality we set  $X_0 = 0, Y_0 = 0$ .

We first recall some facts about the geometry associated with this model:

- The associated Riemmanian metric  $(g_{ij})$  is the three-dimensional hyperbolic metric on  $\mathbb{R} \times \mathbb{R} \times \mathbb{R}^+$  with line element  $ds^2 = \frac{1}{a^2}(dx^2 + dy^2 + da^2)$ , and volume element  $\sqrt{g} = \frac{1}{a^3}$ .
- From e.g. page 179 in [HL08], the geodesic distance between two points  $x_0, y_0, a_0$  and  $(x, y, a)$  is given by

$$\rho = \rho(x_0, y_0, a_0; x, y, a) = \cosh^{-1}\left[1 + \frac{|(x - x_0)^2 + (y - y_0)^2 + (a - a_0)^2|}{2a_0 a}\right]. \quad (4)$$

- The straight lines perpendicular to  $a = 0$  and the circles of  $\mathbb{H}^3$  whose planes are perpendicular to the hyperplane  $a = 0$  and whose centres are in this hyperplane are the geodesics of  $\mathbb{H}^3$  (see Proposition 3.1 on page 127 in doCarmo[doC92]).
- The Laplace-Beltrami operator for  $\mathbb{H}^3$  is given by

$$\Delta = a^2(\partial_x^2 + \partial_y^2 + \partial_a^2) - a\partial_a$$

(see e.g. Eq 3.2 in [MY05]).

- For this model,  $\mathcal{A}$  is given by  $\mathcal{A}^i = b^i - \frac{1}{2} \sum_j \frac{1}{\sqrt{g}} \partial_j (\sqrt{g} g^{ij})$  so  $\mathcal{A} = (-\frac{1}{2}a^2, -\frac{1}{2}a^2, \frac{1}{2}a)$ . Then we have

$$\begin{aligned} A(x_0, y_0, a_0; x, y, a) &= \int_0^1 \langle \mathcal{A}, \dot{\gamma} \rangle dt \\ &= \int_\gamma \left[ \frac{1}{a^2} \mathcal{A}^1 \frac{dx}{dt} + \frac{1}{a^2} \mathcal{A}^2 \frac{dy}{dt} + \frac{1}{a^2} \mathcal{A}^3 \frac{da}{dt} \right] dt \\ &= \int_\gamma \left[ -\frac{1}{2} \frac{dx}{dt} - \frac{1}{2} \frac{dy}{dt} + \frac{1}{2a} \frac{da}{dt} \right] dt \\ &= -\frac{1}{2}(x - x_0) - \frac{1}{2}(y - y_0) + \frac{1}{2} \log \frac{a}{a_0}. \end{aligned} \quad (5)$$

- Combining (1), (2) and (5), we see that the density of  $(X_t, Y_t, a_t)$  has the following small-time behaviour over any compact set of  $(x, y, a)$ :

$$\begin{aligned} \hat{p}(x_0, y_0, a_0; x, y, a, t) &= \hat{p}(x, y, a, t) = \sqrt{g} e^{-\frac{1}{2}(x-x_0+y-y_0) + \frac{1}{2} \log \frac{a}{a_0}} \frac{1}{(2\pi t)^{\frac{3}{2}}} \frac{\rho}{\sinh \rho} e^{-\frac{\rho^2}{2t}} [1 + o(1)] \\ &= \frac{\sqrt{a}}{\sqrt{a_0}} \frac{1}{a^3} e^{-\frac{1}{2}(x-x_0+y-y_0)} \frac{1}{(2\pi t)^{\frac{3}{2}}} \frac{\rho}{\sinh \rho} e^{-\frac{\rho^2}{2t}} [1 + o(1)] \\ &= \frac{1}{\sqrt{a_0 a^{\frac{5}{2}}}} e^{-\frac{1}{2}(x-x_0+y-y_0)} \frac{1}{(2\pi t)^{\frac{3}{2}}} \frac{\rho}{\sinh \rho} e^{-\frac{\rho^2}{2t}} [1 + o(1)] \quad (t \rightarrow 0). \end{aligned} \quad (6)$$

- Temporarily switching variables, we know that  $\hat{p}(x, y, a; x_1, y_1, a_1, t)$  is a solution to the backward heat equation

$$\partial_t \hat{p} = -\frac{1}{2}a^2(\hat{p}_x + \hat{p}_y) + \frac{1}{2}a^2(\hat{p}_{xx} + \hat{p}_{yy} + \hat{p}_{aa})$$

subject to  $\hat{p}(x, y, a; x_1, y_1, a_1, t) = \delta(x - x_1, y - y_1, a - a_1)$ . If we now let

$$\hat{p}(x, y, a; x_1, y_1, a_1, t) = e^{\frac{1}{2}(x-x_1+y-y_1) + \frac{1}{2} \log \frac{a}{a_1}} q(x, y, a; x_1, y_1, a_1, t) \quad (7)$$

then the PDE transforms to

$$\partial_t q = -\frac{1}{2}aq_a + \frac{1}{2}a^2(q_{xx} + q_{yy} + q_{aa}) + V(y)q = \frac{1}{2}\Delta q + V(y)q \quad (8)$$

with  $q(x, y, a; x_1, y_1, a_1, t) = \delta(x - x_1, y - y_1, a - a_1)$ , where  $V(y) = \frac{3}{8} - \frac{1}{4}a^2$  and  $\Delta$  is the Laplace-Beltrami operator as before.

- The law of  $(X_t - x_0, Y_t - y_0)$  is independent of  $x_0, y_0$ , so without loss of generality we set  $x_0 = y_0 = 0$  from here on. Then from (8) we see that

$$\begin{aligned} \hat{p}(x_0, y_0, a_0; x, y, a, t) &= e^{-\frac{1}{2}(x+y)} \frac{1}{a^3} \frac{\sqrt{a}}{\sqrt{a_0}} e^{\frac{3}{8}t} \frac{1}{dx dy da} \mathbb{E}^{\mathbb{P}^0} (e^{-\frac{1}{4} \int_0^t a_s^2 ds} \mathbf{1}_{(X_t, Y_t, a_t) \in (dx, dy, da)}) \\ &\leq e^{-\frac{1}{2}(x+y)} \frac{1}{a^3} \frac{\sqrt{a}}{\sqrt{a_0}} e^{\frac{3}{8}t} \frac{1}{dx dy da} \mathbb{E}^{\mathbb{P}^0} (\mathbf{1}_{(X_t, Y_t, a_t) \in (dx, dy, da)}) \\ &= e^{-\frac{1}{2}(x+y)} \frac{1}{a^3} \frac{\sqrt{a}}{\sqrt{a_0}} e^{\frac{3}{8}t} \hat{p}^0(x, y, a, t) \\ &= e^{-\frac{1}{2}(x+y)} \frac{1}{\sqrt{a_0} a^{\frac{5}{2}}} e^{\frac{3}{8}t} \frac{1}{(2\pi t)^{\frac{3}{2}}} \frac{\rho}{\sinh \rho} e^{-\frac{1}{2}t - \frac{\rho^2}{2t}} \\ &= e^{-\frac{1}{2}(x+y)} \frac{1}{\sqrt{a_0} a^{\frac{5}{2}}} e^{-\frac{1}{8}t} \frac{1}{(2\pi t)^{\frac{3}{2}}} \frac{\rho}{\sinh \rho} e^{-\frac{\rho^2}{2t}} \end{aligned} \quad (9)$$

where  $\mathbb{P}^0$  and  $\hat{p}^0$  denote the measure and transition density associated with the Laplace-Beltrami operator i.e. without the additional  $\mathcal{A}$  term. (9) provides a *global* upper bound on the transition density for  $(X_t, Y_t)$  we can use to deal with the tail integrals outside the compact set where we are applying the Bellaiche heat kernel expansion.

From here on (in contrast to the previous section) we work in log space (i.e.  $x$  and  $y$  will refer to the log of the first and second asset price process), which will be more convenient when working with the hyperbolic metric and the heat kernel. We also introduce the following quantities which will be needed in Theorem 3.1.

$$\begin{aligned} x^*(k) &:= \operatorname{argmin}_{x \leq \log(\frac{1}{2}K)} \bar{H}_K(x) \\ \bar{H}_K(x) &:= \cosh^{-1} \sqrt{1 + \frac{1}{a_0^2} [x^2 + (\log(K - e^x))^2]} \\ \varphi(k) &:= \frac{1}{2} [\bar{H}_K(x^*(k))]^2 \end{aligned} \quad (10)$$

and

$$\begin{aligned} a^*(x, y) &:= \sqrt{a_0^2 + x^2 + y^2} \\ y^* &:= y^*(k) = \log(K - x^*), \\ \Phi(x, y, a) &:= \frac{1}{2} \rho(a_0, 0, 0; a, x, y)^2, \\ \Psi(x) &:= \frac{1}{2} \bar{H}_K(x)^2. \end{aligned} \quad (11)$$

**Theorem 3.1** *For the uncorrelated model in (3) with  $X_0 = 0, Y_0 = 0$ , we have the following small-time behaviour for basket call options for  $K \in (2, \infty)$  with  $K \neq K^* := 2e$ :*

$$\mathbb{E}(S_t^{(1)} + S_t^{(2)} - K)^+ = \psi(k) t^{\frac{3}{2}} e^{-\frac{\varphi(k)}{t}} [1 + o(1)] \quad (t \rightarrow 0) \quad (12)$$

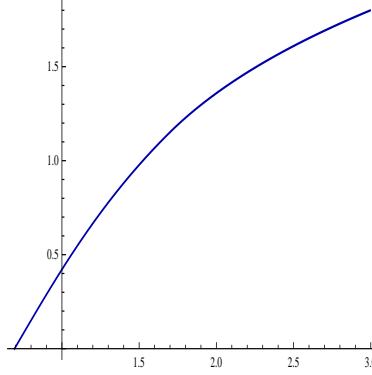


Figure 1: Here we have plotted  $\varphi(k)$  for the uncorrelated SABR model in (3).

where  $k = \log K$ , and

$$\psi(k) = (1 + \mathbf{1}_{k > k^*}) \cdot \frac{e^{-y^*} (e^{2x^*} + e^{2y^*})}{\sqrt{a_0 a^*(x^*, y^*)}} \frac{e^{-\frac{1}{2}(x^* + y^*)}}{\sqrt{2\pi \Phi_{aa}(x^*, y^*, a^*(x^*, y^*)) \Psi''(x^*)}} \frac{1}{\bar{H}_K(x^*) \sinh \bar{H}_K(x^*)}$$

When  $K \in (2, K^*]$ ,  $x^*$  and  $\varphi$  simplify to  $x^*(K) = \log(\frac{1}{2}K)$  and  $\varphi(k) = \frac{1}{2}[\cosh^{-1}(\sqrt{1 + \frac{2}{a_0^2}(k - \log 2)^2})]^2$ . For  $K = 2e$ , we have the special behaviour:

$$\mathbb{E}(S_t^{(1)} + S_t^{(2)} - K)^+ = \frac{1}{\sqrt{a_0 \bar{a}}} \frac{1}{4\pi \sqrt{\Phi_{aa}(x^*, y^*, \bar{a})}} \frac{\Gamma(\frac{1}{4})}{(\xi \bar{H})^{\frac{1}{4}}} \frac{1}{\bar{H} \sinh \bar{H}} t^{\frac{5}{4}} e^{-\frac{\bar{H}^2}{2t}} [1 + o(1)]$$

where  $\bar{H} = \cosh^{-1} \sqrt{1 + \frac{2}{a_0^2}}$ ,  $\bar{a} = \sqrt{1 + \frac{2}{a_0^2}}$  and  $\xi = \frac{5}{12} \frac{1}{\sqrt{2a_0^2 + 4}}$ .

**Proof.** We break the proof into several parts.

- **Computing the small-time behaviour of  $\mathbb{E}(a_t^2 \delta(X_t - x, Y_t - y))$**

From the generalized Itô formula, we have

$$\mathbb{E}(S_t^{(1)} + S_t^{(2)} - K)^+ - \mathbb{E}(2S_0 - K)^+ = \frac{1}{2} \int_0^t \mathbb{E}(a_u^2 \delta(S_u^{(1)} + S_u^{(2)} - K) [(S_u^{(1)})^2 + (S_u^{(2)})^2]) du. \quad (13)$$

To this end, we first compute the small-time behaviour of  $\mathbb{E}(a_t^2 \delta(X_t - x, Y_t - y)) = \int_{a=0}^{\infty} a^2 \hat{p}(x, y, a, t) da$ . Fix a sufficiently large constant  $M > 0$ , let  $\varepsilon = \frac{1}{2} \min\{a_0, 1/\sqrt{a_0^2 + 2M^2}\}$ . Using the heat kernel expansion in (6) over a compact domain  $(x, y, a) \in [-M, M] \times [-M, M] \times [\varepsilon, 1/\varepsilon]$  in (6), and Laplace's method (see [SS03]), we find that

$$\begin{aligned} \mathcal{I}_1 &:= \int_{\varepsilon}^{1/\varepsilon} a^2 \hat{p}(x, y, a, t) da \\ &= \frac{(a^*(x, y))^2}{\sqrt{a_0} (a^*(x, y))^{\frac{5}{2}}} e^{-\frac{1}{2}(x+y)} \frac{1}{2\pi t \sqrt{\Phi_{aa}(x, y, a^*(x, y))}} \frac{\rho^*(x, y)}{\sinh \rho^*(x, y)} e^{-\frac{\rho^*(x, y)^2}{2t}} [1 + o(1)] \\ &= \frac{1}{\sqrt{a_0 a^*(x, y)}} e^{-\frac{1}{2}(x+y)} \frac{1}{2\pi t \sqrt{\Phi_{aa}(x, y, a^*(x, y))}} \frac{\rho^*(x, y)}{\sinh \rho^*(x, y)} e^{-\frac{\rho^*(x, y)^2}{2t}} [1 + o(1)] \end{aligned} \quad (14)$$

and

$$a^*(x, y) = \sqrt{a_0^2 + x^2 + y^2} \quad , \quad \rho^*(x, y) = \cosh^{-1}[\sqrt{1 + (x^2 + y^2)/a_0^2}]$$

are the minimizer (resp. minimum) of  $\rho(a_0, 0, 0; a, x, y)$  over all  $a \in \mathbb{R}^+$ . Moreover, the function  $\rho(a_0, 0, 0; a, x, y)$  is strictly decreasing in  $a$  over  $(0, a^*(x, y)]$  and is strictly increasing in  $a$  over  $[a^*(x, y), \infty)$ . On the other hand,

using the global bound (9) we have that

$$\begin{aligned}
0 \leq \mathcal{I}_2 &:= \int_0^\varepsilon a^2 \hat{p}(x, y, a, t) da \\
&\leq e^{-\frac{1}{2}(x+y)} \frac{e^{-\frac{1}{8}t}}{\sqrt{a_0}} \frac{1}{(2\pi t)^{\frac{3}{2}}} \int_0^\varepsilon \frac{1}{\sqrt{a}} \frac{\rho}{\sinh \rho} e^{-\frac{\rho^2}{2t}} da \\
&\leq e^{-\frac{1}{2}(x+y)} \frac{e^{-\frac{1}{8}t}}{\sqrt{a_0}} \frac{1}{(2\pi t)^{\frac{3}{2}}} \int_0^\varepsilon \frac{1}{\sqrt{a}} \frac{\rho(a_0, 0, 0; \varepsilon, x, y)}{\sinh \rho(a_0, 0, 0; \varepsilon, x, y)} e^{-\frac{\rho(a_0, 0, 0; \varepsilon, x, y)^2}{2t}} da \\
&\leq 2\sqrt{\varepsilon} e^{-\frac{1}{2}(x+y)} \frac{1}{\sqrt{a_0}} \frac{1}{(2\pi t)^{\frac{3}{2}}} \frac{\rho(a_0, 0, 0; \varepsilon, x, y)}{\sinh \rho(a_0, 0, 0; \varepsilon, x, y)} e^{-\frac{\rho(a_0, 0, 0; \varepsilon, x, y)^2}{2t}}, \tag{15}
\end{aligned}$$

where the second line follows from the fact that both  $\frac{\rho}{\sinh \rho}$  and  $e^{-\frac{\rho^2}{2t}}$  are positive, decreasing functions of  $\rho > 0$ , and that  $\rho(a_0, 0, 0; a, x, y)$  is strictly decreasing for  $a \in (0, \varepsilon]$ . Similarly,  $\rho \sim \log a$  as  $a \rightarrow \infty$  so  $\frac{\rho}{\sinh \rho} = o(e^{-\frac{3}{4}\rho}) = o(a^{-\frac{3}{4}})$  as  $a \rightarrow \infty$ . Hence there exists a constant  $C > 0$  such that  $0 \leq \frac{\rho}{\sinh \rho} \leq Ca^{-\frac{3}{4}}$  for all  $a > \frac{1}{\varepsilon}$  and  $(x, y) \in [-M, M] \times [-M, M]$ . It follows that

$$\begin{aligned}
0 \leq \mathcal{I}_3 &:= \int_{1/\varepsilon}^\infty a^2 \hat{p}(x, y, a, t) da \\
&\leq e^{-\frac{1}{2}(x+y)} \frac{e^{-\frac{1}{8}t}}{\sqrt{a_0}} \frac{1}{(2\pi t)^{\frac{3}{2}}} \int_{1/\varepsilon}^\infty \frac{1}{\sqrt{a}} \frac{\rho}{\sinh \rho} e^{-\frac{\rho^2}{2t}} da \\
&\leq e^{-\frac{1}{2}(x+y)} \frac{e^{-\frac{1}{8}t}}{\sqrt{a_0}} \frac{C}{(2\pi t)^{\frac{3}{2}}} \int_{1/\varepsilon}^\infty a^{-\frac{5}{4}} e^{-\frac{\rho(a_0, 0, 0; 1/\varepsilon, x, y)^2}{2t}} da \\
&\leq 4\varepsilon^{\frac{1}{4}} e^{-\frac{1}{2}(x+y)} \frac{C}{\sqrt{a_0}} \frac{1}{(2\pi t)^{\frac{3}{2}}} e^{-\frac{\rho(a_0, 0, 0; 1/\varepsilon, x, y)^2}{2t}}. \tag{16}
\end{aligned}$$

Since  $\rho^*(x, y) < \min\{\rho(a_0, 0, 0; \varepsilon, x, y), \rho(a_0, 0, 0; 1/\varepsilon, x, y)\}$ , we know that  $\mathcal{I}_i = o(\mathcal{I}_1)$  for  $i = 2, 3$ , as  $t \rightarrow 0$ . Thus, for any  $(x, y) \in [-M, M] \times [-M, M]$ , we have

$$\mathbb{E}(a_t^2 \delta(X_t - x, Y_t - y)) = \frac{1}{\sqrt{a_0 a^*(x, y)}} e^{-\frac{1}{2}(x+y)} \frac{1}{2\pi t \sqrt{\Phi_{aa}(x, y, a^*(x, y))}} \frac{\rho^*(x, y)}{\sinh \rho^*(x, y)} e^{-\frac{\rho^*(x, y)^2}{2t}} [1 + o(1)] \tag{17} \quad (t \rightarrow 0)$$

and this expansion is uniform for all  $(x, y) \in [-M, M] \times [-M, M]$ . On the other hand, by standard properties of the Dirac delta function, we also have

$$\mathbb{E}(a_t^2 \delta(S_t^{(1)} - e^x, S_t^{(2)} - e^y)) = \frac{1}{e^x e^y} \mathbb{E}(a_t^2 \delta(X_t - x, Y_t - y)). \tag{18}$$

### • Computing the convolution

Applying a convolution to this we see that

$$\begin{aligned}
\mathcal{J} &:= \mathbb{E}(a_t^2 \delta(S_t^{(1)} + S_t^{(2)} - K) [(S_t^{(1)})^2 + (S_t^{(2)})^2]) \\
&= \int_{e^x=0}^K \mathbb{E}(a_t^2 \delta(S_t^{(1)} - e^x, S_t^{(2)} - e^{y_K(x)}) [e^{2x} + e^{2y_K(x)}] d(e^x) \\
&= \int_{-\infty}^{\log K} \frac{[e^{2x} + e^{2y_K(x)}]}{e^{y_K(x)}} \mathbb{E}(a_t^2 \delta(X_t - x, Y_t - y_K(x))) dx \tag{19}
\end{aligned}$$

where  $y_K(x) := \log(K - e^x)$ . Now fix  $R > 0$  sufficiently large, we may use the estimate in (17) for the compact domain  $\{(x, y) : x \in [-R, \log(K - e^{-R})], e^x + e^y = K\}$ , we have that

$$\begin{aligned}
\mathcal{J}_1 &:= \int_{-R}^{\log(K - e^{-R})} \frac{[e^{2x} + e^{2y_K(x)}]}{e^{y_K(x)}} \mathbb{E}(a_t^2 \delta(X_t - x, Y_t - y_K(x))) dx \\
&= [1 + o(1)] \int_{-R}^{\log(K - e^{-R})} \frac{[e^{2x} + e^{2y_K(x)}]}{e^{y_K(x)}} \frac{e^{-\frac{1}{2}(x+y_K(x))}}{\sqrt{a_0 a^*(x, y_K(x))}} \frac{1}{2\pi t \sqrt{\Phi_{aa}(x, y_K(x), a^*(x, y_K(x))}} \frac{\bar{H}_K(x)}{\sinh \bar{H}_K(x)} e^{-\frac{\bar{H}_K(x)^2}{2t}} dx
\end{aligned}$$

as  $t \rightarrow 0$ , where

$$\bar{H}_K(x) = \rho^*(x, y_K(x)) = \cosh^{-1} \sqrt{1 + [x^2 + (\log(K - e^x))^2]/a_0^2},$$

Note that we can choose  $R > 0$  sufficiently large so that  $\bar{H}_K(x)$  is strictly decreasing over  $(-\infty, -R)$ , and that  $\bar{H}_K(x)$  is strictly increasing over  $(\log(K - e^{-R}), \log K)$ . To apply Laplace's method for  $\mathcal{J}_1$ , we have to minimize  $\bar{H}_K(x)$  over all  $x$  in the allowable range  $[-R, \log(K - e^{-R})]$ . By the monotonicity of  $\bar{H}_K(x)$ , the minimum over  $[-R, \log(K - e^{-R})]$  is the same as  $\inf_{x < \log K} \bar{H}_K(x)$ . Thus we have to minimize  $x^2 + \log(K - e^x)$  over  $x$  in this range, for which we will need the following Lemma:

**Lemma 3.2** *Let  $\bar{h}_K(z) = (\log z)^2 + (\log(K - z))^2$  and set  $K^* = 2e$ . Then we have the following classification for the minimizer(s) of  $\bar{h}_K(z)$ :*

- If  $K \in (0, K^*)$ ,  $\bar{h}_K''(z) = \bar{h}_K''(K - z) > 0$  for all  $z \in (0, K)$ , so  $z^* = \frac{1}{2}K$  is the unique global minimum of  $\bar{h}_K$ ;
- If  $K = K^*$ ,  $\bar{h}_K''(z) = \bar{h}_K''(K - z) > 0$  for all  $z \in (0, K) \setminus \{\frac{1}{2}K\}$  and  $\bar{h}_K''(\frac{1}{2}K) = \bar{h}_K'''(\frac{1}{2}K) = 0$  and  $\bar{h}_K''''(\frac{1}{2}K) > 0$ , so  $z^* = \frac{1}{2}K$  is the unique global minimum of  $\bar{h}_K$ ;
- If  $K \in (K^*, \infty)$ ,  $\bar{h}_K$  has two global minima,  $x^*$  and  $K - x^*$ , with  $x^* \in (0, \frac{1}{2}K)$ .

**Proof of Lemma 3.2.** See Appendix A (see also page 3 in [BFL14] for a statement of this result and a plot of the three different cases). ■

Let us denote by

$$\Psi(x) := \frac{1}{2} \bar{H}_K(x)^2, \quad \varphi(k) := \inf_{x < k} \Psi(x) > 0, \quad \text{where } k = \log K. \quad (20)$$

- $K \in (0, 2e)$

Applying Laplace's method to  $\mathcal{J}_1$  for  $K \in (0, 2e)$ , we see that

$$\mathcal{J}_1 = \frac{e^{-y^*}(e^{2x^*} + e^{2y^*})}{\sqrt{a_0 a^*(x^*, y^*)}} \frac{e^{-\frac{1}{2}(x^* + y^*)}}{\sqrt{2\pi t} \sqrt{\Phi_{aa}(x^*, y^*, a^*(x^*, y^*))}} \frac{1}{\sqrt{\Psi''(x^*)}} \frac{\bar{H}_K(x^*)}{\sinh \bar{H}_K(x^*)} e^{-\frac{\varphi(k)}{t}} [1 + o(1)], \quad (21)$$

where  $x^* \equiv x^*(K) = \log(\frac{1}{2}K)$  and  $y^* = y_K(x^*)$ , and  $\varphi(k)$  can be calculated explicitly as

$$\varphi(k) = \frac{1}{2} [\cosh^{-1}(\sqrt{1 + \frac{2}{a_0^2}(k - \log 2)^2})]^2$$

and we can re-write  $x^*$  as  $x^* = k - \log 2$ . As an aside, by trivial adjustment to (21) (using (18)) we also see that the exact density  $f(K)$  of  $S_t^1 + S_t^2$  has the asymptotic behaviour

$$f(K) = e^{-y^*} \frac{1}{\sqrt{a_0 a^*(x^*, y^*)}^{\frac{5}{2}}} \frac{1}{\sqrt{2\pi t} \sqrt{\Phi_{aa}(x^*, y^*, a^*(x^*, y^*))}} \frac{1}{\sqrt{\Psi''(x^*)}} \frac{\bar{H}_K(x^*)}{\sinh \bar{H}_K(x^*)} e^{-\frac{\varphi(k)}{t}} [1 + o(1)]. \quad (22)$$

- $K > 2e$

Similarly, for  $K > 2e$  we have

$$\mathcal{J}_1 = \frac{2e^{-y^*}(e^{2x^*} + e^{2y^*})}{\sqrt{a_0 a^*(x^*, y^*)}} \frac{e^{-\frac{1}{2}(x^* + y^*)}}{\sqrt{2\pi t} \sqrt{\Phi_{aa}(x^*, y^*, a^*(x^*, y^*))}} \frac{1}{\sqrt{\Psi''(x^*)}} \frac{\bar{H}_K(x^*)}{\sinh \bar{H}_K(x^*)} e^{-\frac{\varphi(k)}{t}} [1 + o(1)], \quad (23)$$

where now  $x^* = \operatorname{argmin}_{x < \log K} \bar{H}_K(x) = \operatorname{argmin}_{x < \log(\frac{1}{2}K)} \bar{H}_K(x)$  (this equality follows from the second bullet point in Lemma 3.2),  $y^* = y_K(x^*)$ , and note that we also write this as  $\log \operatorname{argmin}_{x \in (0, \frac{1}{2}K]} \bar{h}_K(x)$  where  $\bar{h}_K(\cdot)$  is defined as in Lemma 3.2. Note that (23) is twice the expression in (21) because we now have two saddlepoints.

- **The special value**  $K^* = 2e$

At the special value  $K^* = 2e$ , the second derivative term  $\bar{H}''_K(x^*)$  vanishes, and we have

$$\bar{H}_{K^*}(x) = \bar{H}_{K^*}(x^*) + \xi(x - x^*)^4 + O((x - x^*)^5),$$

so

$$\bar{H}_{K^*}(x)^2 = \bar{H}_{K^*}(x^*)^2 + 2\xi\bar{H}_{K^*}(x^*)(x - x^*)^4 + O((x - x^*)^5),$$

where  $x^* \equiv x^*(K^*) = 1$  (and hence  $y^* = y_K(x^*) = 1$ ), and  $\xi = \frac{5}{24\sqrt{1+a_0^2/2}}$ . Using the identity  $\int_{-\infty}^{\infty} e^{-\zeta x^4} dx = \frac{\Gamma(\frac{1}{4})}{2\zeta^{\frac{1}{4}}}$ , we now obtain

$$\begin{aligned} \mathcal{J}_1 &= \frac{e^2 + e^2}{e^1} e^{-\frac{1}{2}(1+1)} \frac{1}{\sqrt{a_0\bar{a}}} \frac{1}{2\pi t \sqrt{\Phi_{aa}(x^*, y^*, \bar{a})}} \frac{\Gamma(\frac{1}{4})}{2(\xi\bar{H}_{K^*}(x^*))^{\frac{1}{4}} t^{-\frac{1}{4}}} \frac{\bar{H}}{\sinh \bar{H}} e^{-\frac{\bar{H}^2}{2t}} [1 + o(1)] \\ &= \frac{2}{\sqrt{a_0\bar{a}}} \frac{1}{4\pi \sqrt{\Phi_{aa}(x^*, y^*, \bar{a})}} \frac{\Gamma(\frac{1}{4})}{(\xi\bar{H})^{\frac{1}{4}} t^{\frac{3}{4}}} \frac{\bar{H}}{\sinh \bar{H}} e^{-\frac{\bar{H}^2}{2t}} [1 + o(1)] \end{aligned} \quad (24)$$

where  $\bar{H} = \bar{H}_{K^*}(x^*) = \cosh^{-1} \sqrt{1 + \frac{2}{a_0^2}}$ ,  $\bar{a} = a^*(x^*, y^*) = \sqrt{1 + \frac{2}{a_0^2}}$ .

- **Controlling the tail integrals**

We now control the tail integrals in (19). To this end, denote  $T_t := \int_0^t a_s^2 ds$ . Then we know that,  $X_t|T_t$  and  $Y_t|T_t$  are independent  $N(-\frac{1}{2}T_t, T_t)$  normal random variables, and hence for all  $(x, y) \in \mathbb{R}^2$ ,

$$\begin{aligned} \mathbb{E}(\delta(X_t - x, Y_t - y)|a_t, T_t) &= \frac{1}{dxdy} \mathbb{P}(X_t \in dx, Y_t \in dy|a_t, T_t) = \frac{1}{dxdy} \mathbb{P}(X_t \in dx|a_t, T_t) \mathbb{P}(Y_t \in dy|a_t, T_t) \\ &\leq \frac{1}{dx} \mathbb{P}(X_t \in dx|a_t, T_t) \frac{1}{\sqrt{2\pi T_t}} \\ &= \frac{1}{\sqrt{2\pi T_t}} \mathbb{E}(\delta(X_t - x)|a_t, T_t). \end{aligned} \quad (25)$$

Thus, we have

$$\begin{aligned} 0 \leq \mathcal{J}_2 &:= \int_{-\infty}^{-R} \frac{[e^{2x} + e^{2y_K(x)}]}{e^{y_K(x)}} \mathbb{E}(a_t^2 \delta(X_t - x, Y_t - y_K(x))) dx \\ &\leq \frac{e^{-2R} + K^2}{K - e^{-R}} \int_{-\infty}^{-R} \mathbb{E}(a_t^2 \delta(X_t - x, Y_t - y_K(x))) dx \\ &\leq \frac{e^{-2R} + K^2}{K - e^{-R}} \frac{1}{\sqrt{2\pi}} \int_{-\infty}^{-R} \mathbb{E}(a_t^2 T_t^{-\frac{1}{2}} \delta(X_t - x)) dx \\ &= \frac{e^{-2R} + K^2}{K - e^{-R}} \frac{1}{\sqrt{2\pi}} \mathbb{E}(a_t^2 T_t^{-\frac{1}{2}} 1_{\{X_t \leq -R\}}). \end{aligned} \quad (26)$$

By the Cauchy-Schwarz inequality we have

$$\begin{aligned} \mathbb{E}(a_t^2 T_t^{-\frac{1}{2}} 1_{\{X_t \leq -R\}}) &\leq \sqrt{\mathbb{E}(a_t^5 1_{\{X_t \leq -R\}})} \sqrt{\mathbb{E}(a_t^{\frac{3}{2}} T_t^{-1})} \\ &\leq \sqrt[4]{\mathbb{E}(a_t^5)} \sqrt[4]{\mathbb{P}(X_t \leq -R)} \sqrt{\mathbb{E}(a_t^{\frac{3}{2}} T_t^{-1})} \\ &\leq a_0^{\frac{5}{4}} e^{\frac{5}{2}t} \cdot \frac{e^{\frac{\pi^2}{4t} - \frac{t}{16}}}{\sqrt[4]{2\pi t}} \sqrt[4]{\mathbb{P}(X_t \leq -R)}, \end{aligned} \quad (27)$$

where the last line is due to the fact that  $a_t^5 = a_0^5 \exp(5W_t^3 - \frac{5}{2}t)$  and the bound for  $\mathbb{E}(a_t^{\frac{3}{2}} T_t^{-1})$  in Appendix B.



We now bound the probability  $\mathbb{P}(X_t \leq -R)$  by choosing an appropriate  $R > 0$ . To that end, let  $c \equiv 8\varphi(k) + \pi^2 > 0$ . For fixed  $a_0 > 0$  and  $x_1 < 0$ , it can be easily verified that

$$\inf_{a>0} \left\{ 1 + \frac{x_1^2 + (a - a_0)^2}{2a_0a} \right\} = \inf_{a>0} \left\{ \frac{x_1^2 + a_0^2 + a^2}{2a_0a} \right\} = \frac{1}{2a_0} \inf_{a>0} \left\{ \frac{x_1^2 + a_0^2}{a} + a \right\} = \frac{1}{2a_0} \cdot 2\sqrt{x_1^2 + a_0^2} = \sqrt{1 + x_1^2/a_0^2}.$$

Thus, by choosing  $x_1 = -a_0\sqrt{\cosh^2 \sqrt{2c} - 1} = -a_0 \sinh \sqrt{2c} < 0$ , from (4) (with  $y = y_0$ ) we see that  $\sqrt{2c}$  is the minimum distance from point  $(0, a_0)$  to the vertical line  $x = x_1$  in  $\mathbb{H}^2 = \{(x, a) : a > 0\}$ . By Theorem 4.6 of [AFLZ14], for  $x_1 < 0$ , we know that for all  $t > 0$  sufficiently small,

$$\mathbb{E}(e^{X_t} - e^{x_1})^+ - (1 - e^{x_1}) \leq C(x_1)e^{-\frac{c}{t}}t^{\frac{3}{2}}, \quad (28)$$

where  $C(x_1) > 0$  is a constant that depends on  $x_1$  only, hence by put-call parity, we have

$$\mathbb{E}(e^{x_1} - e^{X_t})^+ = \mathbb{E}(e^{X_t} - e^{x_1})^+ - (1 - e^{x_1}) \leq C(x_1)e^{-\frac{c}{t}}t^{\frac{3}{2}}. \quad (29)$$

Finally, observe that

$$\begin{aligned} \mathbb{E}(e^{x_1} - e^{X_t})^+ &= \mathbb{E}(e^{x_1} - S_t^{(1)})^+ = \int_0^\infty \mathbb{P}((e^{x_1} - S_t^{(1)})^+ \geq u) du = \int_0^\infty \mathbb{P}(e^{x_1} - S_t^{(1)} \geq u) du \\ &= \int_0^{e^{x_1}} \mathbb{P}(S_t^{(1)} \leq e^{x_1} - u) du \\ &= \int_0^{e^{x_1}} \mathbb{P}(S_t^{(1)} \leq v) dv \\ &\geq \int_{\frac{1}{2}e^{x_1}}^{e^{x_1}} \mathbb{P}(S_t^{(1)} \leq v) dv \\ &\geq \frac{1}{2}e^{x_1} \mathbb{P}(S_t^{(1)} \leq \frac{1}{2}e^{x_1}) \\ &= \frac{1}{2}e^{x_1} \mathbb{P}(X_t \leq x_1 - \log 2). \end{aligned} \quad (30)$$

Combining (29) and (30), we have

$$\mathbb{P}(X_t \leq x_1 - \log 2) \leq 2e^{-x_1} C(x_1) e^{-\frac{c}{t}} t^{\frac{3}{2}}.$$

$$\mathbb{E}(a_t^2 T_t^{-\frac{1}{2}} 1_{\{X_t \leq -R\}}) \leq a_0^{\frac{5}{4}} e^{\frac{5}{2}t} \cdot \frac{e^{\frac{\pi^2}{4t} - \frac{t}{16}}}{\sqrt[4]{2\pi t}} \sqrt[4]{\mathbb{P}(X_t \leq -R)}, \quad (31)$$

It follows that we can choose any  $R \geq \log 2 - x_1$ , then we have

$$\begin{aligned} \mathbb{E}(a_t^2 T_t^{-\frac{1}{2}} 1_{\{X_t \leq -R\}}) &\leq a_0^{\frac{5}{4}} e^{\frac{39}{16}t + \frac{\pi^2}{4t}} \frac{1}{\sqrt[4]{2\pi t}} \sqrt[4]{\mathbb{P}(X_t \leq -R)} \\ &\leq a_0^{\frac{5}{4}} e^{\frac{39}{16}t + \frac{\pi^2}{4t}} \frac{1}{\sqrt[4]{2\pi t}} \sqrt[4]{2e^{-x_1} C(x_1) e^{-\frac{c}{t}} t^{\frac{3}{2}}} \\ &= \sqrt[4]{\frac{C(x_1) e^{-x_1}}{\pi}} \cdot a_0^{\frac{5}{4}} e^{\frac{39}{16}t} t^{\frac{1}{8}} e^{-\frac{\pi^2 - c}{4t}} \\ &\leq \sqrt[4]{\frac{C(x_1) e^{-x_1}}{\pi}} \cdot a_0^{\frac{5}{4}} e^{\frac{39}{16}t} e^{-\frac{2\varphi(k)}{t}} t^{\frac{1}{8}} \end{aligned} \quad (32)$$

(recall that  $c \equiv 8\varphi(k) + \pi^2$ ,  $x_1 = -a_0\sqrt{\cosh^2 \sqrt{2c} - 1}$  and we have chosen  $R \geq \log 2 - x_1$ ). Thus, we have  $\mathcal{J}_2 = o(\mathcal{J}_1)$  as  $u \rightarrow 0$  because we have  $2\varphi(k)$  as opposed to  $\varphi(k)$  in the exponent for  $\mathcal{J}_2$ . Similarly, for

$$\begin{aligned} \mathcal{J}_3 &:= \int_{\log(K - e^{-R})}^{\log K} \frac{[e^{2x} + e^{2y_K(x)}]}{e^{y_K(x)}} \mathbb{E}(a_t^2 \delta(X_t - x, Y_t - y_K(x)) dx \\ &= \int_{-\infty}^{-R} \frac{[e^{2y} + e^{2x_K(y)}]}{e^{x_K(y)}} \mathbb{E}(a_t^2 \delta(X_t - x_K(y), Y_t - y) dy, \end{aligned}$$

where  $x_K(y) = \log(K - e^y)$ , we also have  $\mathcal{J}_3 = o(\mathcal{J}_1)$  as  $u \rightarrow \infty$ . Overall, we have

$$\mathcal{J} = \mathcal{J}_1(1 + o(1)) = (1 + o(1)) \int_{-R}^{\log(K - e^{-R})} \frac{[e^{2x} + e^{2y_K(x)}]}{e^{y_K(x)}} \mathbb{E}(a_t^2 \delta(X_t - x, Y_t - y_K(x))) dx,$$

as  $t \rightarrow 0$ .

• **Final step: computing the small-time basket call option asymptotics**

We now recall that

$$\mathbb{E}(S_t^{(1)} + S_t^{(2)} - K)^+ - \mathbb{E}(2S_0 - K)^+ = \frac{1}{2} \int_0^t \mathbb{E}(a_u^2 \delta(S_u^{(1)} + S_u^{(2)} - K)[(S_u^{(1)})^2 + (S_u^{(2)})^2]) du. \quad (33)$$

We first deal with the case  $K \neq 2e$  and we recall the following well known asymptotic relation

$$\Upsilon(k, t) := \int_0^t \frac{1}{\sqrt{u}} e^{-\frac{k^2}{2u}} du = \frac{2e^{-\frac{k^2}{2t}} t - k\sqrt{2\pi t}}{\sqrt{t}} + k\sqrt{2\pi} \operatorname{Erf}\left(\frac{k}{\sqrt{2t}}\right) = \frac{2}{k^2} t^{\frac{3}{2}} e^{-\frac{k^2}{2t}} [1 + O(\frac{t}{k^2})] \quad (34)$$

for  $k > 0$ , which just follows from the well known result that  $\Phi^c(z) \sim \frac{1}{z\sqrt{2\pi}} e^{-z^2/2} [1 + O(\frac{1}{z^2})]$  as  $z \rightarrow \infty$ . Note that the leading order error term here is  $O(\frac{t}{k^2})$  so this approximation will generally work badly if  $\frac{t}{k^2}$  is not  $\ll 1$ , which is often the case in practice in financial applications (we will return to this point in the numerics part in section 4.3).

Now recall that

$$\mathcal{J} := \mathbb{E}(a_t^2 \delta(S_t^{(1)} + S_t^{(2)} - K)[(S_t^{(1)})^2 + (S_t^{(2)})^2]) = \mathcal{J}_1(1 + o(1)) \quad (35)$$

and from (21) and (23) we know that

$$\mathcal{J}_1 = (1 + 1_{k > k^*}) \frac{e^{-y^*} (e^{2x^*} + e^{2y^*})}{\sqrt{a_0 a^*(x^*, y^*)}} \frac{e^{-\frac{1}{2}(x^* + y^*)}}{\sqrt{2\pi t} \sqrt{\Phi_{aa}(x^*, y^*, a^*(x^*, y^*))}} \frac{1}{\sqrt{\Psi''(x^*)}} \frac{\bar{H}_K(x^*)}{\sinh \bar{H}_K(x^*)} e^{-\frac{\varphi(k)}{t}} [1 + o(1)] \quad (36)$$

where  $x^* \equiv x^*(K) = \log(\frac{1}{2}K)$ ,  $y_K(x) := \log(K - e^x)$  and  $\varphi(k) = \frac{1}{2}[\bar{H}_K(x^*)]^2$ . Applying (34) to (33) using (36), we obtain following small-time behaviour for basket call options for  $K \in (2, \infty)$  with  $K \neq K^* := 2e$ :

$$\mathbb{E}(S_t^{(1)} + S_t^{(2)} - K)^+ = \psi(k) t^{\frac{3}{2}} e^{-\frac{\varphi(k)}{t}} [1 + o(1)] \quad (t \rightarrow 0) \quad (37)$$

where  $k = \log K$ , and

$$\psi(k) = (1 + 1_{k > k^*}) \cdot \frac{e^{-y^*} (e^{2x^*} + e^{2y^*})}{\sqrt{a_0 a^*(x^*, y^*)}} \frac{e^{-\frac{1}{2}(x^* + y^*)}}{\sqrt{2\pi \Phi_{aa}(x^*, y^*, a^*(x^*, y^*))}} \frac{1}{\Psi''(x^*)} \frac{1}{\bar{H}_K(x^*) \sinh \bar{H}_K(x^*)}$$

When  $K \in (2, K^*]$ ,  $x^*$  and  $\varphi$  simplify to  $x^*(K) = \log(\frac{1}{2}K)$  and  $\varphi(k) = \frac{1}{2}[\cosh^{-1}(\sqrt{1 + \frac{2}{a_0^2}(k - \log 2)^2})]^2$ .

For the special case  $K = 2e$ , recall from (24) that

$$\mathcal{J}_1 = \frac{2}{\sqrt{a_0 \bar{a}}} \frac{1}{4\pi \sqrt{\Phi_{aa}(x^*, y^*, \bar{a})}} \frac{\Gamma(\frac{1}{4})}{(\xi \bar{H})^{\frac{1}{4}} t^{\frac{3}{4}}} \frac{\bar{H}}{\sinh \bar{H}} e^{-\frac{\bar{H}^2}{2t}} [1 + o(1)] \quad (38)$$

where  $\bar{H} = \bar{H}_{K^*}(x^*) = \cosh^{-1} \sqrt{1 + \frac{2}{a_0^2}}$ ,  $\bar{a} = a^*(x^*, y^*) = \sqrt{1 + \frac{2}{a_0^2}}$ . Using that

$$\int_0^t \frac{1}{u^{\frac{3}{4}}} e^{-k^2/2u} du = \frac{\sqrt{k}}{2^{\frac{1}{4}}} \Gamma(-\frac{1}{4}, \frac{k^2}{2t}) = \frac{2}{k^2} t^{\frac{5}{4}} e^{-\frac{k^2}{2t}} \quad (k > 0) \quad (39)$$

we obtain

$$\mathbb{E}(S_t^{(1)} + S_t^{(2)} - K)^+ = \frac{1}{\sqrt{a_0 \bar{a}}} \frac{1}{4\pi \sqrt{\Phi_{aa}(x^*, y^*, \bar{a})}} \frac{\Gamma(\frac{1}{4})}{(\xi \bar{H})^{\frac{1}{4}}} \frac{1}{\bar{H} \sinh \bar{H}} t^{\frac{5}{4}} e^{-\frac{\bar{H}^2}{2t}} [1 + o(1)]$$

where  $\bar{H} = \cosh^{-1} \sqrt{1 + \frac{2}{a_0^2}}$ ,  $\bar{a} = \sqrt{1 + \frac{2}{a_0^2}}$  and  $\xi = \frac{5}{12} \frac{1}{\sqrt{2a_0^2 + 4}}$ .

■

## 4 The general bi-variate SABR model: non-zero correlation

### 4.1 Small-time asymptotics for basket call options

We now consider a generalized version of the model in (3):

$$\begin{cases} dX_t = -\frac{1}{2}a_t^2\sigma_x^2 dt + \sigma_x a_t dW_t^1, \\ dY_t = -\frac{1}{2}a_t^2\sigma_y^2 dt + \sigma_y a_t dW_t^2, \\ da_t = \alpha a_t dW_t^3 \end{cases} \quad (40)$$

where  $dW_t^1 dW_t^2 = \rho_{xy} dt$ ,  $dW_t^1 dW_t^3 = \rho_{xa} dt$ ,  $dW_t^2 dW_t^3 = \rho_{ya} dt$  with  $\sigma_x, \sigma_y, \alpha > 0$ ,  $\rho_{xy}^2 < 1$ ,  $\rho_{xa}^2 < 1$ ,  $\rho_{ya}^2 < 1$  and  $\rho_{xy}^2 + \rho_{xa}^2 + \rho_{ya}^2 - 2\rho_{xy}\rho_{xa}\rho_{ya} < 1$ , which ensures that the covariance matrix of the three Brownian motions is positive semi-definite, and we set  $X_0 = Y_0 = 0$  as before. Throughout, we set  $\bar{\rho}_{xy} = \sqrt{1 - \rho_{xy}^2}$ ,  $\bar{\rho}_{xa} = \sqrt{1 - \rho_{xa}^2}$  and  $\bar{\rho}_{ya} = \sqrt{1 - \rho_{ya}^2}$ .

**Remark 4.1** A fully general model would be four-dimensional, with one volatility process for each asset, but the analysis for such a model is significantly messier. The one drawback of our existing model is that both assets have the same vol-of-vol  $\alpha$ , which may not be unreasonable if both assets are in the same sector.

The heat equation associated with (40) is given by

$$\partial_t u - \frac{1}{2}a^2(\sigma_x^2 u_x + \sigma_y^2 u_y) + \frac{1}{2}a^2(\sigma_x^2 u_{xx} + \sigma_y^2 u_{yy} + \alpha^2 u_{aa} + 2\rho_{xy}\sigma_x\sigma_y u_{xy} + 2\rho_{xa}\sigma_x\alpha u_{xa} + 2\rho_{ya}\sigma_y\alpha u_{ya}).$$

Now let  $\tau = \alpha^2 t$ , so  $\partial_t u = \alpha^2 \partial_\tau u$ . Then this equation transforms to

$$\alpha^2 \partial_\tau u - \frac{1}{2}a^2(\sigma_x^2 u_x + \sigma_y^2 u_y) + \frac{1}{2}a^2(\sigma_x^2 u_{xx} + \sigma_y^2 u_{yy} + \alpha^2 u_{aa} + 2\rho_{xy}\sigma_x\sigma_y u_{xy} + 2\rho_{xa}\sigma_x\alpha u_{xa} + 2\rho_{ya}\sigma_y\alpha u_{ya}).$$

or equivalently

$$\partial_\tau u - \frac{1}{2}\frac{a^2}{\alpha^2}(\sigma_x^2 u_x + \sigma_y^2 u_y) + \frac{1}{2}a^2\left(\frac{\sigma_x^2}{\alpha^2} u_{xx} + \frac{\sigma_y^2}{\alpha^2} u_{yy} + u_{aa} + 2\rho_{xy}\frac{\sigma_x\sigma_y}{\alpha^2} u_{xy} + 2\rho_{xa}\frac{\sigma_x}{\alpha} u_{xa} + 2\rho_{ya}\frac{\sigma_y}{\alpha} u_{ya}\right).$$

If we now set  $x' = \alpha x/\sigma_x$ ,  $y' = \alpha y/\sigma_y$ , then PDE further transforms to

$$\partial_\tau u - \frac{1}{2}\frac{a^2}{\alpha}(\sigma_x u_x + \sigma_y u_y) + \frac{1}{2}a^2(u_{x'x'} + u_{y'y'} + u_{aa} + 2\rho_{xy}u_{x'y'} + 2\rho_{xa}u_{x'a} + 2\rho_{ya}u_{y'a}). \quad (41)$$

Then the diffusion matrix for (41) is given by  $(a_{ij}) = a^2 \Sigma \Sigma^T$ , where

$$\Sigma = \begin{bmatrix} \beta & \frac{\gamma}{\bar{\rho}_{ya}} & \rho_{xa} \\ 0 & \bar{\rho}_{ya} & \rho_{ya} \\ 0 & 0 & 1 \end{bmatrix}$$

and  $\beta = \sqrt{\bar{\rho}_{xa}^2 - \gamma^2/\bar{\rho}_{ya}^2}$ ,  $\gamma = \rho_{xy} - \rho_{xa}\rho_{ya}$ , and this matrix now only involves correlations. Moreover,

$$\Sigma^{-1} = \begin{bmatrix} \frac{1}{\beta} & -\frac{\gamma}{\bar{\rho}_{ya}^2\beta} & \frac{\xi}{\bar{\rho}_{ya}^2\beta} \\ 0 & \frac{1}{\bar{\rho}_{ya}} & -\frac{\rho_{ya}}{\bar{\rho}_{ya}} \\ 0 & 0 & 1 \end{bmatrix} \quad (42)$$

where  $\xi = \rho_{xy}\rho_{ya} - \rho_{xa}$ . The process associated with (41) now takes the form

$$\begin{cases} dX'_t = -\frac{1}{2}a_t^2\frac{\sigma_x}{\alpha} dt + a_t(\beta dB_t^1 + \frac{\gamma}{\bar{\rho}_{ya}} dB_t^2 + \rho_{xa} dB_t^3), \\ dY'_t = -\frac{1}{2}a_t^2\frac{\sigma_y}{\alpha} dt + a_t(\bar{\rho}_{ya} dB_t^2 + \rho_{ya} dB_t^3), \\ da_t = a_t dB_t^3 \end{cases} \quad (43)$$

with  $(X'_0, Y'_0, a_0) = (\frac{\alpha}{\sigma_x} X_0, \frac{\alpha}{\sigma_y} Y_0, a_0) = (0, 0, a_0)$ , where  $B^1, B^2, B^3$  are independent Brownians.

We define the following two quantities which will be needed in the theorem which follows.

$$\begin{aligned}\Phi(a) &= \frac{1}{2}d(x, y, a)^2 \\ \Psi(x) &= \frac{d(x, y_K(x), a^*(x, y))^2}{2\alpha^2} \\ a^*(x, y) &= \operatorname{argmin}_{a>0} d(x, y, a) = \left[ \frac{y^2\alpha^2\beta^2(\bar{\rho}_{ya}^2 + \beta^2\gamma^2)\sigma_x^2 - 2xy\alpha^2\beta^2\gamma\bar{\rho}_{ya}^2\sigma_x\sigma_y + \bar{\rho}_{ya}^4(x^2\alpha^2 + a_0^2\beta^2\sigma_x^2)\sigma_y^2}{(\xi^2 + \beta^2\bar{\rho}_{ya}^2)\sigma_x^2\sigma_y^2} \right]^{\frac{1}{2}} \\ \hat{A}(x, y, a) &= -\frac{1}{2}\left(\frac{\sigma_x}{\beta\alpha} - \frac{\gamma\sigma_y}{\bar{\rho}_{ya}^2\beta\alpha}\right)x - \frac{\sigma_y}{2\alpha\bar{\rho}_{ya}}y + \frac{1}{2}\log\frac{a}{a_0}.\end{aligned}$$

**Theorem 4.1** *For the general correlated model in (40) with  $X_0 = 0, Y_0 = 0$ , we have the following small-time behaviour for a basket call option for  $K > 2$ :*

$$\mathbb{E}(S_t^{(1)} + S_t^{(2)} - K)^+ = \frac{\bar{\psi}(k)}{\sqrt{2\pi}} t^{\frac{3}{2}} e^{-\frac{\bar{\Lambda}(k)^2}{2t}} [1 + o(1)] \quad (\text{if } \Psi''(x_j^*) > 0 \quad \forall j = 1 \dots N) \quad (44)$$

where  $k = \log K$ ,  $\bar{H}_K(x, y) = d(x, y, a^*(x, y))$ ,  $\bar{\Lambda}(k) = \min_x \bar{H}_K(x, y_K(x))$ ,  $\bar{\Lambda}(k) = \Lambda(k)/\alpha^2$ ,  $x_j^* = \operatorname{argmin}_x \bar{H}_K(x, y_K(x))$  for  $j = 1 \dots N$  where  $N < \infty$  is the number of global minimizers of  $\bar{H}_K(x, y_K(x))$ ,  $y_K(x) = \log(K - e^x)$  as before,  $y_j^* = y_K(x_j^*)$  and

$$\begin{aligned}d(x, y, a) &= \rho(\Sigma^{-1}(0, 0, a_0)^T, \Sigma^{-1}\left(\frac{\alpha x}{\sigma_x}, \frac{\alpha y}{\sigma_y}, a\right)^T), \\ \psi(k) &= \sum_{j=1}^N (a_j^*)^2 \frac{e^{x_j^*}(\sigma_x^2 e^{2x_j^*} + \sigma_y^2 e^{2y_j^*})}{e^{x_j^* + y_j^*}} \frac{\sqrt{g}(\Sigma^{-1}\left(\frac{\alpha x_j^*}{\sigma_x}, \frac{\alpha y_j^*}{\sigma_y}, a_j^*\right)^T) \chi(x_j^*, y_j^*, a_j^*)}{\sqrt{2\pi\alpha}\sqrt{\Phi_{aa}(a_j^*)\Psi''(x_j^*)}} \frac{1}{d(x_j^*, y_j^*, a_j^*) \sinh d(x_j^*, y_j^*, a_j^*)} \frac{1}{\det\Sigma} \frac{\alpha^4}{\sigma_x\sigma_y},\end{aligned}$$

$\chi(x, y, a) = e^{\hat{A}(\Sigma^{-1}(0, 0, a_0)^T, \Sigma^{-1}(\frac{\alpha x}{\sigma_x}, \frac{\alpha y}{\sigma_y}, a)^T)}$ ,  $\bar{\psi}(k) = \sqrt{2\pi} \psi(k)$  and  $\rho(\cdot, \cdot, \cdot)$  is defined as in (4).

**Proof.** (of Theorem 4.1). Let

$$\begin{bmatrix} d\hat{X}_t \\ d\hat{Y}_t \\ d\hat{a}_t \end{bmatrix} = \Sigma^{-1} \begin{bmatrix} dX'_t \\ dY'_t \\ da_t \end{bmatrix} = a_t^2 \Sigma^{-1} \begin{bmatrix} -\frac{1}{2}\sigma_x/\alpha \\ -\frac{1}{2}\sigma_y/\alpha \\ 0 \end{bmatrix} dt + a_t \begin{bmatrix} dB_t^1 \\ dB_t^2 \\ dB_t^3 \end{bmatrix} = a_t^2 \begin{bmatrix} \frac{1}{\beta} & -\frac{\gamma}{\bar{\rho}_{ya}^2\beta} & \frac{\xi}{\bar{\rho}_{ya}^2\beta} \\ 0 & \frac{1}{\bar{\rho}_{ya}} & -\frac{\rho_{ya}}{\bar{\rho}_{ya}} \\ 0 & 0 & 1 \end{bmatrix} \begin{bmatrix} -\frac{1}{2}\frac{\sigma_x}{\alpha} \\ -\frac{1}{2}\frac{\sigma_y}{\alpha} \\ 0 \end{bmatrix} dt + a_t \begin{bmatrix} dB_t^1 \\ dB_t^2 \\ dB_t^3 \end{bmatrix} \quad (45)$$

with  $(\hat{X}_0, \hat{Y}_0, \hat{a}_0)^T = \Sigma^{-1}(0, 0, a_0)^T$ . Then from Theorem 2.1, we know that the joint density of  $(\hat{X}_t, \hat{Y}_t, \hat{a}_t)$  behaves like

$$\hat{p}(\hat{x}, \hat{y}, \hat{a}, t) = \sqrt{g}(\hat{x}, \hat{y}, \hat{a}) e^{\hat{A}(\hat{x}, \hat{y}, \hat{a})} \frac{1}{(2\pi t)^{\frac{3}{2}}} \frac{\rho}{\sinh \rho} e^{-\frac{\rho^2}{2t}} [1 + o(1)] \quad (t \rightarrow 0)$$

where  $\rho = \rho(0, 0, \hat{a}_0; \hat{x}, \hat{y}, \hat{a})$  and  $\hat{A}(x, y, a) = \int_0^1 \langle \mathcal{A}, \dot{\gamma}(s) \rangle ds$ , where  $\gamma$  is the unique distance-minimizing geodesic joining  $(0, 0, \hat{a}_0)$  to  $(\hat{x}, \hat{y}, \hat{a})$  under the metric  $ds^2 = \frac{1}{a^2}(dx^2 + dy^2 + da^2)$ , and  $\mathcal{A}$  has to be computed as before from the drift coefficient in (45) using the formula  $\mathcal{A}^i = b^i - \frac{1}{2} \sum_j \frac{1}{\sqrt{g}} \partial_j (\sqrt{g} g^{ij})$ ; in this case we find that  $\mathcal{A} = (a^2(-\frac{\sigma_x}{2\beta\alpha} + \frac{\gamma\sigma_y}{2\bar{\rho}_{ya}^2\beta\alpha}), -a^2\frac{\sigma_y}{2\alpha\bar{\rho}_{ya}}, \frac{1}{2}a)$  and we have

$$\begin{aligned}\hat{A}(\hat{x}, \hat{y}, a) &= \int_0^1 \langle \mathcal{A}, \dot{\gamma} \rangle dt = \int_{\gamma} \left[ \frac{1}{a^2} \mathcal{A}^1 \frac{d\hat{x}}{dt} + \frac{1}{a^2} \mathcal{A}^2 \frac{d\hat{y}}{dt} + \frac{1}{a^2} \mathcal{A}^3 \frac{da}{dt} \right] dt \\ &= \int_{\gamma} \left[ \left( -\frac{\sigma_x}{2\beta\alpha} + \frac{\gamma\sigma_y}{2\bar{\rho}_{ya}^2\beta\alpha} \right) \frac{d\hat{x}}{dt} + \left( -\frac{\sigma_y}{2\alpha\bar{\rho}_{ya}} \right) \frac{d\hat{y}}{dt} + \frac{1}{2a} \frac{da}{dt} \right] dt \\ &= -\frac{1}{2} \left( \frac{\sigma_x}{\beta\alpha} - \frac{\gamma\sigma_y}{\bar{\rho}_{ya}^2\beta\alpha} \right) \hat{x} - \frac{\sigma_y}{2\alpha\bar{\rho}_{ya}} \hat{y} + \frac{1}{2} \log \frac{a}{a_0}.\end{aligned}$$

Then the density of  $(X'_t, Y'_t, a_t)$  satisfies

$$\hat{p}(x', y', a, t) = \sqrt{g}(\hat{x}, \hat{y}, \hat{a}) e^{\hat{A}(\hat{x}, \hat{y}, \hat{a})} \frac{1}{(2\pi t)^{\frac{3}{2}}} \frac{\rho}{\sinh \rho} e^{-\frac{\rho^2}{2t}} \frac{1}{\det \Sigma} [1 + o(1)] \quad (t \rightarrow 0)$$

where now  $(\hat{x}, \hat{y}, \hat{a})^T = \Sigma^{-1}(x', y', a)^T$ . Transforming back to the original variables, we now obtain

$$\begin{aligned} \hat{p}(x, y, a, t) &= \sqrt{g}(\hat{x}, \hat{y}, \hat{a}) e^{\hat{A}(\hat{x}, \hat{y}, \hat{a})} \frac{1}{(2\pi\alpha^2 t)^{\frac{3}{2}}} \frac{\rho}{\sinh \rho} e^{-\frac{\rho^2}{2\alpha^2 t}} \frac{1}{\det \Sigma} \frac{\alpha^2}{\sigma_x \sigma_y} [1 + o(1)] \\ &= \sqrt{g}(\Sigma^{-1}(\frac{\alpha x}{\sigma_x}, \frac{\alpha y}{\sigma_y}, a)^T) e^{\hat{A}(\Sigma^{-1}(0,0,a_0)^T, \Sigma^{-1}(\frac{\alpha x}{\sigma_x}, \frac{\alpha y}{\sigma_y}, a)^T)} \frac{1}{(2\pi\alpha^2 t)^{\frac{3}{2}}} \frac{d(x, y, a)}{\sinh d(x, y, a)} e^{-\frac{d(x, y, a)^2}{2\alpha^2 t}} \frac{1}{\det \Sigma} \frac{\alpha^2}{\sigma_x \sigma_y} [1 + o(1)] \end{aligned}$$

as  $t \rightarrow 0$ , where  $d(x, y, a)$  is defined in the statement of the theorem and we are using that  $(\hat{x}, \hat{y}, \hat{a})^T = \Sigma^{-1}(\frac{\alpha x}{\sigma_x}, \frac{\alpha y}{\sigma_y}, a)^T$ . For future reference we define

$$\hat{p}^1(x_0, y_0, a_0; x, y, a, t) := \sqrt{g}(\Sigma^{-1}(\frac{\alpha x}{\sigma_x}, \frac{\alpha y}{\sigma_y}, a)^T) e^{\hat{A}(\Sigma^{-1}(0,0,a_0)^T, \Sigma^{-1}(\frac{\alpha x}{\sigma_x}, \frac{\alpha y}{\sigma_y}, a)^T)} \frac{1}{(2\pi\alpha^2 t)^{\frac{3}{2}}} \frac{d(x, y, a)}{\sinh d(x, y, a)} e^{-\frac{d(x, y, a)^2}{2\alpha^2 t}} \frac{1}{\det \Sigma} \frac{\alpha^2}{\sigma_x \sigma_y} \quad (46)$$

to be the leading order approximation here.

From a formal application of Laplace's method (see below for discussion on justifying this rigorously), we have

$$\begin{aligned} \mathbb{E}(a_t^2 \delta(X_t - x, Y_t - y)) &= \int_{a=0}^{\infty} a^2 \hat{p}(x, y, a, t) da \\ &= (a^*)^2 \sqrt{g}(\Sigma^{-1}(\frac{\alpha x}{\sigma_x}, \frac{\alpha y}{\sigma_y}, a^*)^T) \frac{\chi(x, y, a^*)}{2\pi\alpha t \sqrt{\Phi_{aa}(a^*)}} \frac{d(x, y, a^*)}{\sinh d(x, y, a^*)} e^{-\frac{d(x, y, a^*)^2}{2\alpha^2 t}} \frac{1}{\det \Sigma} \frac{\alpha^2}{\sigma_x \sigma_y} [1 + o(1)] \end{aligned}$$

where  $a^* = a^*(x, y)$  is the unique minimizer of  $d(x, y, a)$ . Then applying a convolution as before, we see that

$$\begin{aligned} &\mathbb{E}(a_t^2 \delta(S_t^{(1)} + S_t^{(2)} - K)[(S_t^{(1)})^2 + (S_t^{(2)})^2]) \\ &\sim \int_{e^x=0}^K \frac{e^{2x} + e^{2y_K}}{e^{x+y_K}} (a^*)^2 \sqrt{g}(\Sigma^{-1}(\frac{\alpha x}{\sigma_x}, \frac{\alpha y}{\sigma_y}, a^*)^T) \frac{\chi(x, y, a^*)}{2\pi\alpha t \sqrt{\Phi_{aa}(a^*)}} \frac{d(x, y, a^*)}{\sinh d(x, y, a^*)} e^{-\frac{d(x, y, a^*)^2}{2\alpha^2 t}} \frac{1}{\det \Sigma} \frac{\alpha^2}{\sigma_x \sigma_y} d(e^x) \\ &\sim \int_{-\infty}^k \frac{[e^{2x} + e^{2y_K(x)}]}{e^{y_K(x)}} (a^*)^2 \sqrt{g}(\Sigma^{-1}(\frac{\alpha x}{\sigma_x}, \frac{\alpha y_K(x)}{\sigma_y}, a^*)^T) \frac{\chi(x, y_K(x), a^*)}{2\pi\alpha t \sqrt{\Phi_{aa}(a^*)}} \frac{d(x, y_K(x), a^*)}{\sinh d(x, y_K(x), a^*)} e^{-\frac{d(x, y_K(x), a^*)^2}{2\alpha^2 t}} \frac{\alpha^2}{\sigma_x \sigma_y \det \Sigma} dx \end{aligned}$$

where  $y_K = y_K(x) = \log(K - e^x)$ . Since  $\bar{H}_K(x, y_K(x))$  is real analytic in  $x \in (-\infty, \log K)$ , there can only exist finitely many roots to the equation  $\frac{d}{dx} \bar{H}_K(x, y_K(x)) = 0$  over this domain. It follows that there can only be a finite number of minimizers  $x_j^*$ 's such that  $\bar{H}_K(x_j^*, y_K(x_j^*)) = \Lambda(k) = \min_x \bar{H}_K(x, y_K(x))$ . Applying Laplace's method again, we can now re-write this expression as

$$\sim \sum_{j=1}^N \frac{e^{x_j^*} [e^{2x_j^*} + e^{2y_j^*}]}{e^{x_j^* + y_j^*}} (a_j^*)^2 \sqrt{g}(\Sigma^{-1}(\frac{\alpha x_j^*}{\sigma_x}, \frac{\alpha y_j^*}{\sigma_y}, a_j^*)^T) \frac{\chi(x_j^*, y_j^*, a_j^*)}{\sqrt{2\pi\alpha t} \sqrt{\Phi_{aa}(a_j^*)} \Psi''(x_j^*)} \frac{d(x_j^*, y_j^*, a_j^*)}{\sinh d(x_j^*, y_j^*, a_j^*)} e^{-\frac{d(x_j^*, y_j^*, a_j^*)^2}{2\alpha^2 t}} \frac{\alpha^2}{\sigma_x \sigma_y \det \Sigma} \quad (47)$$

where  $a_j^*$  now refers to  $a^*(x_j^*, y_j^*)$ . Similar to before, we know from the generalized Itô formula that

$$\mathbb{E}(S_t^{(1)} + S_t^{(2)} - K)^+ - \mathbb{E}(2S_0 - K)^+ = \frac{1}{2} \int_0^t \mathbb{E}((\sigma_x^2 + \sigma_y^2) a_u^2 \delta(S_u^{(1)} + S_u^{(2)} - K)[(S_u^{(1)})^2 + (S_u^{(2)})^2]) du \quad (48)$$

Combining this with (34), we find that the asymptotic basket call price is given by

$$\sum_{j=1}^N \frac{e^{x_j^*} [\sigma_x^2 e^{2x_j^*} + \sigma_y^2 e^{2y_j^*}]}{e^{x_j^* + y_j^*}} (a_j^*)^2 \sqrt{g}(\Sigma^{-1}(\frac{\alpha x_j^*}{\sigma_x}, \frac{\alpha y_j^*}{\sigma_y}, a_j^*)^T) \frac{\chi(x_j^*, y_j^*, a_j^*)}{\sqrt{2\pi\alpha} \sqrt{\Phi_{aa}(a_j^*)} \Psi''(x_j^*)} \frac{t^{\frac{3}{2}} e^{-\frac{d(x_j^*, y_j^*, a_j^*)^2}{2\alpha^2 t}}}{d(x_j^*, y_j^*, a_j^*) \sinh d(x_j^*, y_j^*, a_j^*)} \frac{1}{\det \Sigma} \frac{\alpha^4}{\sigma_x \sigma_y} [1 + o(1)]$$

The map from  $(\hat{x}, \hat{y}, \hat{a})$  to  $(x, y, a)$  is an invertible linear mapping, which maps compact domains to compact domains. Thus, the tail integral (an integer over the complement of a compact set) in the convolution of  $\hat{p}_t(x, y_K(x), a^*(x, y_K(x)))$

in  $x$  also corresponds to a tail integral of relevant joint density in  $\hat{x}$ , which can be controlled using similar arguments as in the proof of Theorem 3.1.

In particular, from (43) we know that, conditional on the natural filtration generated by  $(a_t)_{t \geq 0}$ ,  $\mathcal{F}_t^a$ , we have

$$\begin{aligned} X'_t &= -\frac{1}{2} \frac{\sigma_x}{\alpha} T_t + \int_0^t a_s (\beta dB_s^1 + \frac{\gamma}{\rho_{ya}} dB_s^2) + \rho_{xa}(a_t - a_0), \\ Y'_t &= -\frac{1}{2} \frac{\sigma_y}{\alpha} T_t + \bar{\rho}_{ya} \int_0^t a_s dB_s^2 + \rho_{ya}(a_t - a_0). \end{aligned}$$

Recall that  $\beta = \sqrt{\bar{\rho}_{xa}^2 - \gamma^2 / \bar{\rho}_{ya}^2}$ ,  $\gamma = \rho_{xy} - \rho_{xa} \rho_{ya}$  so  $\beta^2 + \frac{\gamma^2}{\bar{\rho}_{ya}^2} = \bar{\rho}_{xa}^2$ . It follows that  $(X'_t | \mathcal{F}_t^a) \sim N(-\frac{1}{2} \frac{\sigma_x}{\alpha} T_t + \rho_{xa}(a_t - a_0), \bar{\rho}_{xa}^2 T_t)$ ,  $(Y'_t | \mathcal{F}_t^a) \sim N(-\frac{1}{2} \frac{\sigma_y}{\alpha} T_t + \rho_{ya}(a_t - a_0), \bar{\rho}_{ya}^2 T_t)$ ,  $X'_t$  and  $Y'_t$  given  $\mathcal{F}_t^a$  are correlated normal with correlation  $\frac{\gamma}{\bar{\rho}_{xa} \bar{\rho}_{ya}}$ . Hence,  $(X_t | \mathcal{F}_t^a) \sim N(-\frac{1}{2} \frac{\sigma_x^2}{\alpha^2} T_t + \rho_{xa} \frac{\sigma_x}{\alpha} (a_t - a_0), \frac{\sigma_x^2}{\alpha^2} \bar{\rho}_{xa}^2 T_t)$  and  $(Y_t | \mathcal{F}_t^a) \sim N(-\frac{1}{2} \frac{\sigma_y^2}{\alpha^2} T_t + \rho_{ya} \frac{\sigma_y}{\alpha} (a_t - a_0), \bar{\rho}_{ya}^2 \frac{\sigma_y^2}{\alpha^2} T_t)$ ,  $X_t$  and  $Y_t$  are correlated with correlation  $\hat{\rho} := \frac{\gamma}{\bar{\rho}_{xa} \bar{\rho}_{ya}}$ . It follows that, for all  $(x, y) \in \mathbb{R}^2$ , we have

$$\begin{aligned} \mathbb{E}(\delta(X_t - x, Y_t - y) | \mathcal{F}_t^a) &= \mathbb{E}(\delta(X_t - x) | \mathcal{F}_t^a) \cdot \mathbb{E}(\delta(Y_t - y) | X_t = x, \mathcal{F}_t^a) \\ &\leq \mathbb{E}(\delta(X_t - x) | \mathcal{F}_t^a) \cdot \frac{1}{\frac{\sigma_y}{\alpha} \bar{\rho}_{ya} \sqrt{2\pi T_t} \sqrt{1 - \hat{\rho}^2}} \end{aligned}$$

and in the second line we have used that  $\text{Var}(Y_t | X_t, \mathcal{F}_t^a) = (1 - \hat{\rho}^2) \text{Var}(Y_t | \mathcal{F}_t^a)$  by standard results on conditional Normal distributions. Similar to (26), we then have

$$\begin{aligned} 0 &\leq \int_{-\infty}^{-R} \frac{[e^{2x} + e^{2y_K(x)}]}{e^{y_K(x)}} \mathbb{E}(a_t^2 \delta(X_t - x, Y_t - y_K(x))) dx \\ &\leq \frac{e^{-2R} + K^2}{K - e^{-R}} \int_{-\infty}^{-R} \mathbb{E}(a_t^2 \delta(X_t - x, Y_t - y_K(x))) dx \\ &\leq \frac{e^{-2R} + K^2}{K - e^{-R}} \frac{1}{\frac{\sigma_y}{\alpha} \bar{\rho}_{ya} \sqrt{2\pi} \sqrt{1 - \hat{\rho}^2}} \int_{-\infty}^{-R} \mathbb{E}(a_t^2 T_t^{-\frac{1}{2}} \delta(X_t - x)) dx \\ &= \frac{e^{-2R} + K^2}{K - e^{-R}} \frac{1}{\frac{\sigma_y}{\alpha} \bar{\rho}_{ya} \sqrt{2\pi} \sqrt{1 - \hat{\rho}^2}} \mathbb{E}(a_t^2 T_t^{-\frac{1}{2}} 1_{\{X_t \leq -R\}}) \end{aligned}$$

and we then proceed as in (27). ■

## 4.2 Implied volatility

We define the implied volatility of a basket call option with strike  $K$  and maturity  $t$  under the model in (40) as the unique solution  $\hat{\sigma}_t(k)$  to:

$$\mathbb{E}(S_t^{(1)} + S_t^{(2)} - K)^+ = C^{\text{BS}}(2, K, \hat{\sigma}_t, t)$$

where  $C^{\text{BS}}(S, K, \hat{\sigma}_t, t)$  is the usual Black-Scholes call option pricing formula with zero interest rates. It will be convenient to re-write this equation in a normalized form as

$$\frac{1}{2} \mathbb{E}(S_t^{(1)} + S_t^{(2)} - K)^+ = C^{\text{BS}}(1, e^{x_1}, \hat{\sigma}_t(x_1), t)$$

where  $e^{x_1} = \frac{1}{2}K$ , and we now show the dependence of  $\hat{\sigma}_t$  on  $x_1$  explicitly.

**Corollary 4.2** *For the model defined above, let  $\hat{\sigma}_t(x_1)$  denote the implied volatility at maturity  $t$  for strike  $K = 2e^{x_1} = e^k$ , with  $K > 2$ . Then we have the following asymptotic behaviour for  $\hat{\sigma}_t(x_1)$ :*

$$\hat{\sigma}_t^2(x_1) = \hat{\sigma}_0(x_1)^2 + a(x_1)t + o(t), \quad (49)$$

as  $t \rightarrow 0$ , where

$$\hat{\sigma}_0(x_1) = \frac{|x_1|}{\sqrt{2\Lambda(k)}}, \quad a(x_1) = \frac{2\hat{\sigma}_0^4(x_1)}{x_1^2} \log \frac{\frac{1}{2}\bar{\psi}(k)}{A_{\text{BS}}(x, \hat{\sigma}_0(x_1))}. \quad (50)$$

**Proof.** If we equate the small-time basket call expansion in Theorem 4.1 (normalized by the effective initial stock price, which is 2) and the small-time expansion for a standard European call option with initial stock price 1 and strike price  $e^{x_1}$  using the usual Black Scholes call option formula with volatility parameter equal to  $\sqrt{\sigma^2 + at}$  and maturity  $t$  (see Proposition 3.4 in [FJL12]) we get

$$\frac{\bar{\psi}(k)}{\sqrt{2\pi}} t^{\frac{3}{2}} e^{-\frac{\bar{\Lambda}(k)^2}{2t}} [1 + o(1)] = \frac{A_{\text{BS}}(x_1, \sigma)}{\sqrt{2\pi}} e^{\frac{1}{2} \frac{ax_1^2}{\sigma^4}} t^{\frac{3}{2}} e^{-\frac{x_1^2}{2\sigma^2 t}} [1 + o(1)] \quad (51)$$

where  $A_{\text{BS}}(x_1, \sigma) = \frac{\sigma^3}{x_1^2} e^{\frac{1}{2} x_1}$ . Taking the log of both sides and cancelling terms we see that

$$-\frac{\bar{\Lambda}(k)^2}{2t} + \log \bar{\psi}(k) = -\frac{x_1^2}{2\sigma^2 t} + \log[A_{\text{BS}}(x_1, \sigma)] + \frac{1}{2} \frac{ax_1^2}{\sigma^4} + o(1) \quad (52)$$

and equating the leading order and correction terms we obtain (50). This equating argument is made rigorous in section 7.2 of [FJL12] and is a model-independent argument. ■

### 4.3 Numerical results

Before delving into the numerics, we first recall the asymptotic relation

$$\Upsilon(k, t) := \int_0^t \frac{1}{\sqrt{u}} e^{-\frac{k^2}{2u}} du = \frac{2}{k^2} t^{\frac{3}{2}} e^{-\frac{k^2}{2t}} [1 + O(\frac{t}{k^2})] \quad (53)$$

for  $k > 0$  as  $t \rightarrow 0$  from (34), and we note (again) that the error term inside the bracket is  $O(\frac{t}{k^2})$ . We apply this relation in the proofs of Theorem 3.1 and 4.1 for third and final integration (i.e. the outer integral of the original triple integral, where we perform the final integration over  $t$  using the Tanaka formula) and  $k$  is given by  $k = \text{argmin}_{-\infty < \log K} d(x, y_K(x), a^*(x, y))$ . If we apply the saddlepoint approximation formula in Theorem 4.1 for basket calls which are closer to the at-the-money value of  $K = 2$  (and hence not unrealistically exponentially small in price)  $\frac{t}{k^2}$  is not  $\ll 1$ , so the approximation does not work so well. Thus, in practice we recommend using the exact (closed-form) expression for  $\Upsilon(k, t)$  given in (34) in terms of the Erf function for the final outer integral rather than the asymptotic result in (34), but for completeness we compute numerics for both approximations, and the approximation given in Theorems 3.1 and 4.1 still work very well for basket calls which are further from away from  $K = 2$ . This is an issue with *any* small-time saddlepoint estimate for out-of-the-money call options under a stochastic volatility model, and is not specific to basket call options or this article. We use the NMinimize command in Mathematica to perform the minimization in computing  $\Lambda(k) = \min_x \bar{H}_K(x, y_K(x))$ .

In the first table below, we have tabulated the ratio of the approximate price of the basket call computed numerically as a triple integral in Mathematica:  $P^{\text{numint}}(K) := \int_{x=-\infty}^{\infty} \int_{y=-\infty}^{\infty} \int_{a=0}^{\infty} (e^x + e^y - K)^+ \hat{p}^1(x_0, y_0, a_0; x, y, a, t) dadydx$ <sup>3</sup> to the basket call saddlepoint approximation in (44) (which we call  $P^{\text{saddle}}(K)$ , see the first column on the table); in the second column we compute the same ratio but we replace the saddlepoint approximation with the adjusted formula where we use the exact expression for  $\Upsilon(k, t)$  for the final integration (we call this  $P^{\text{saddle}, \Upsilon}(K)$ ). The parameters here are  $t = .003$  (which is of the order of 1 day), and  $\sigma_x = \sigma_y = \sigma_a = 1/\sqrt{10} \approx 0.316$ ,  $\rho_{xy} = 0.01$ ;  $\rho_{ya} = -.05$ ;  $\rho_{xa} = 0.02$ ). As expected we see that both saddlepoint approximations do not work as well as  $K$  tends to the at-the-money value of 2 (because for  $K$  values close to 2 we are in the *moderate*, not the large deviations regime), but work very well for larger out-of-the money  $K$ -values. The main purpose of this first table is not to show how well the approximation works in practice (because for  $t = 0.003$  the basket call prices here are too low to be of practical use), but rather to initially verify check that the formula is correct before applying it to more realistic scenarios, see next paragraph).

In the second table, we consider a more realistic maturity of  $t = 0.02$  (with the same parameters as above but now  $\rho_{xy} = 0.01$ ,  $\rho_{ya} = .05$  and  $\rho_{xa} = 0.2$ ) and for the smaller strikes the basket call prices now take sensible values i.e. not astronomically small, and we see that the  $P^{\text{saddle}, \Upsilon}(K)$  approximation still works well. In this table we also compute the implied volatilities  $\hat{\sigma}$  associated with  $P^{\text{numint}}(K)$  and  $P^{\text{saddlepoint}, \Upsilon}(K)$  and the leading order implied volatility computed from the first equation in Eq (50) (these numbers are plotted in Figure 5). In the final three graphs, we plot these same three implied volatility smiles for three different sets of parameters with common maturity  $t = .01$ .

<sup>3</sup>where  $\hat{p}^1$  is the leading order approximation to the true transition density given in (46)

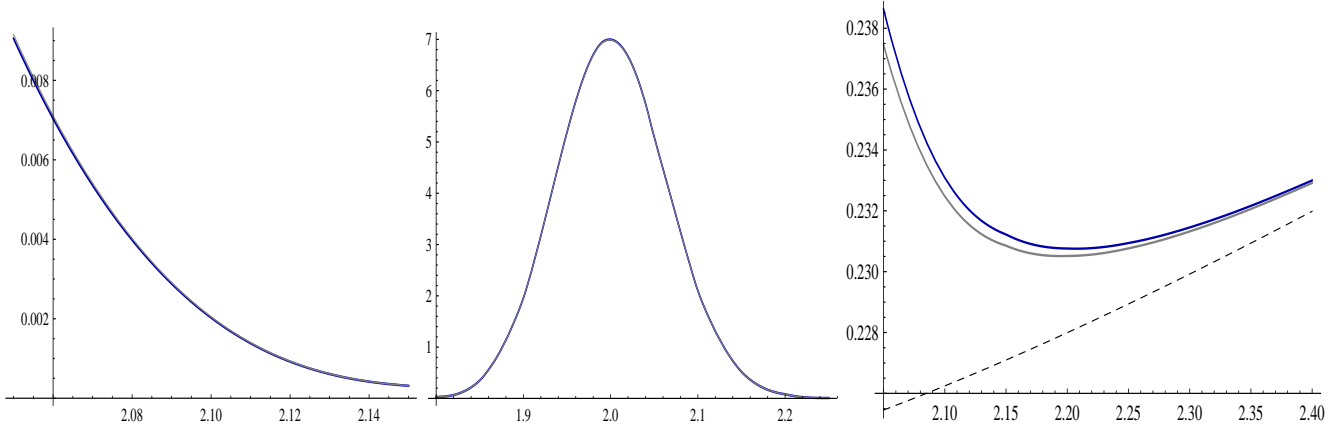


Figure 2: In the graph on the left, we have plotted  $P^{\text{saddle}}(K)$  (grey) versus  $P^{\text{numint}}(K)$  (blue) for  $\sigma_x = \sigma_y = \sigma_a = 1/\sqrt{10} \approx 0.316$ ,  $\rho_{xy} = 0.01$ ,  $\rho_{ya} = .05$ ,  $\rho_{xa} = 0.2$  and  $t = 0.02$  (this is the data in the second table), and the parameters values given above. In the middle plot we plot the saddlepoint approximation for the density of  $S_t^1 + S_t^2$  (grey) versus the density of  $S_t^1 + S_t^2$  via numerical integration (blue), the former is just obtained by making a trivial adjustment to the prefactors in front of the exponential in (47), similar to what we did for Figure 4 (the two density approximations are so similar here that it is difficult to make out the blue curve underneath the grey one). In the right plot we plot the corresponding implied volatility with the same colour scheme and we also plot the leading order implied volatility  $\hat{\sigma}_0(K)$  using the formula in the first equation in Eq (50) (black dashed).

Note that we have not used Monte Carlo simulation anywhere because the usual Wilard[Wil97] conditioning trick cannot be applied in this context because there is no closed-form expression for basket calls under the Black-Scholes model. The other alternative would be to use importance sampling by changing to a measure under which the large deviations event becomes likely, but this would involve very messy calculations of the geodesics for the hyperbolic metric on  $\mathbb{H}^3$  with a full correlation structure.<sup>4</sup>

$K (t = 0.003)$	$\frac{P^{\text{numint}}(K)}{P^{\text{saddle}}(K)}$	$\frac{P^{\text{numint}}(K)}{P^{\text{saddle}, \Upsilon}(K)}$
2.1	0.86086	1.010238
2.3	0.98603	1.008826
2.5	1.00044	1.009752
2.7	1.00138	1.006666
2.9	0.99875	1.002281
3.1	0.99957	1.002183
3.3	1.00928	1.011362

$K (t = 0.02)$	$P^{\text{numint}}(K)$	$P^{\text{saddle}, \Upsilon}(K)$	$\frac{P^{\text{saddle}, \Upsilon}(K)}{P^{\text{numint}}(K)}$	$\hat{\sigma}^{\text{numint}, \Upsilon}(K)$	$\hat{\sigma}^{\text{saddle}, \Upsilon}(K)$	$\hat{\sigma}^0(K)$
2.05	0.0090506	0.00914671	1.010619	0.23862	0.23745	0.22545
2.1	0.0020265	0.00204746	1.010308	0.23308	0.23248	0.22624
2.15	0.000313645	0.000316796	1.010046	0.23122	0.23085	0.22709
2.2	3.37991E-05	3.41335E-05	1.009894	0.23076	0.23052	0.22799
2.25	2.58363E-06	2.60899E-06	1.009816	0.23094	0.23077	0.22894
2.3	1.4354E-07	1.44944E-07	1.009781	0.23145	0.23132	0.22992
2.35	5.95334E-09	6.01137E-09	1.009747	0.23216	0.23206	0.23094
2.4	1.8942E-10	1.91261E-10	1.009719	0.23300	0.23291	0.23198

<sup>4</sup>We found a mistake in the Monte Carlo implementation of the previous version and graph it produced was overly flattering because it was plotted in terms of implied volatility.



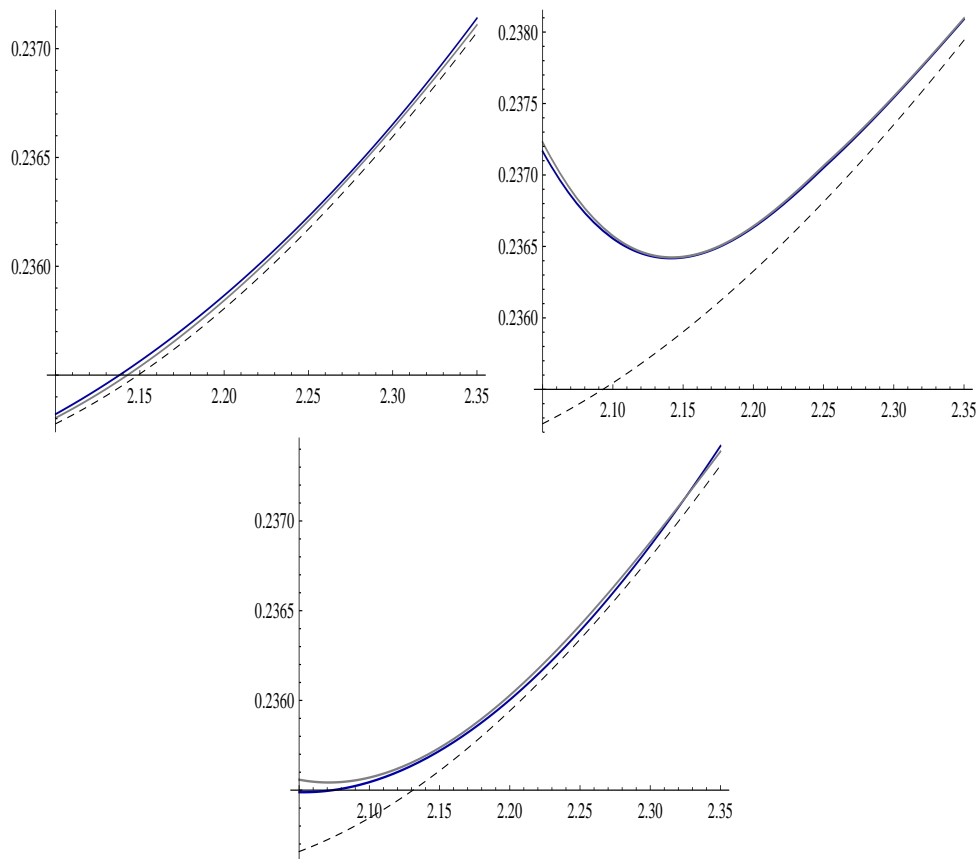


Figure 3: Here we have plotted the implied volatility for  $P^{\text{saddle}}(K)$  (grey) versus the implied volatility for  $P^{\text{numint}}(K)$  (blue) versus the leading order implied volatility  $\hat{\sigma}_0(K)$  (black dashed) for  $\sigma_x = 1.1/\sqrt{10}$ ,  $\sigma_y = \sigma_a = 1/\sqrt{10} \approx 0.316$  and  $t = .01$  in all plots with  $\rho_{xy} = \rho_{ya} = \rho_{xa} = 0$  (left graph), and  $\rho_{xy} = 0$ ,  $\rho_{ya} = .03$ ,  $\rho_{xa} = 0.02$  (right graph) and  $\rho_{xy} = 0$ ,  $\rho_{ya} = -.02$ ,  $\rho_{xa} = 0.03$  (lower graph)

## 4.4 Quanto and spread options

It should be possible to adapt Theorem 4.1 to compute small-time asymptotics for a quanto option which pays  $(S_t^1/S_t^2 - K) = (e^{X_t - Y_t} - K)^+$ , e.g. an option on the EUR/GBP exchange rate but with payout in dollars or a spread option which pays  $(S_t^1 - S_t^2 - K)$ ; we defer the details for future research, but for the former case it is clear that  $y_K(x)$  should be changed to  $\log K - x$ .

## References

- [ABBF03] Avellaneda, M., D.Boyer-Olson, J.Busca, P.Friz, “Application of large deviation methods to the pricing of index options in finance”, *Comptes Rendus de l’Académie des Sciences - Series I - Mathématique*, (2003).
- [ABBF04] Avellaneda, M., D.Boyer-Olson, J.Busca, P.Friz, “Reconstructing volatility”, *RISK* (2004).
- [AFLZ14] Armstrong, J., M.Forde, M.Lorig and H.Zhang, “Small-time asymptotics under local-stochastic volatility with a jump-to-default: curvature and the heat kernel expansion”, 2014 (submitted).
- [BFL14] Bayer, C., P.K.Friz, and P.Laurence, “On The Probability Density Function Of Baskets”, “Large Deviations and Asymptotic Methods in Finance (P. K. Friz, J. Gatheral, A. Gulisashvili, A. Jacquier, J. Teichmann, Editors)”, Springer International Publishing Switzerland 2015, 449-472.
- [Bel81] Bellaïche, C., “Comportement asymptotique de  $p(\mathbf{x}; \mathbf{y}, t)$ ”, *Astérisque*, 84-85, 151-187, 1981.
- [BH10] Bleistein, N. and R.A.Handelsman, “Asymptotic Expansions of Integrals”, Dover Books on Mathematics, 2010.
- [doC92] do Carmo, M., “Riemmanian Geometry”, Birkhäuser (1992).
- [Dav88] Davies, E.B., “Gaussian Upper Bounds for the Heat Kernel of Some Second-Order Operators on Riemannian Manifolds”, *J. Funct. Anal.*, 80, 16-32 (1988).
- [DZ98] Dembo, A. and O.Zeitouni, “Large deviations techniques and applications”, Jones and Bartlet publishers, Boston, 1998.
- [Ell09] Richard S. Ellis, “The Theory of Large Deviations and Applications to Statistical Mechanics”, Lecture Notes for Ecole de Physique Les Houches August 5-8, 2008, updated November 19, 2009.
- [FJL12] Forde, M., A.Jacquier and R.Lee “The small-time smile and term structure of implied volatility under the Heston model”, *SIAM J. Finan. Math.*, 3, 690-708, 2012.
- [FZ14] Forde, M. and H.Zhang, “Sharp tail estimates for the correlated SABR model”, preprint, 2014.
- [FP13] Forde, M. and A.Pogudin, “The Large-maturity smile for the SABR and CEV-Heston models”, *Int. J. Theor. Appl. Finance*, 16 (8), 2013.
- [Forde11] Forde, M., “Exact pricing and large-time asymptotics for the modified SABR model and the Brownian exponential functional”, *Int. J. Theor. Appl. Finance*, 14, 1-19, 2011.
- [GM98] Grigor’yan, A. and M.Noguchi, “The Heat Kernel on Hyperbolic Space”, *Bull. London Math. Soc.*, (1998),30 (6): 643-650.
- [GT13] A. Gulisashvili and P. Tankov, “Tail behavior of sums and differences of log-normal random variables”, [arXiv:1309.3057v1](https://arxiv.org/abs/1309.3057v1), 2013.
- [GT15] Gulisashvili, A. and P.Tankov, “Implied volatility of basket options at extreme strikes” in “Large Deviations and Asymptotic Methods in Finance (P. K. Friz, J. Gatheral, A. Gulisashvili, A. Jacquier, J. Teichmann, Editors)”, Springer International Publishing Switzerland 2015, pp. 175-212.
- [HL08] Henry-Labordère, P., “Analysis, Geometry, and Modeling in Finance: Advanced Methods in Option Pricing”, Chapman & Hall, 2008.
- [Hsu] Hsu, E.P., “A brief introduction to Brownian motion on a Riemmanian manifold”, lecture notes.

- [Hsu02] Hsu, E.P., “Stochastic analysis on manifolds”, Graduate Studies in Mathematics, vol. 38, American Mathematical Society, Providence, RI, 2002.
- [LS14] Linders, D., W. Schoutens, “Basket Option Pricing and Implied Correlation in a Lévy Copula Model”, preprint, 2014.
- [MRTZ15] Ma, J., Z. Ren, N. Touzi and J. Zhang, “Large Deviations for Non-Markovian Diffusions and a Path-Dependent Eikonal Equation”, *Annales de l’IHP: Probabilités et Statistique*.
- [MY05] Matsumoto, H. and Yor, M., “Exponential functionals of Brownian motion, II: Some related diffusion processes”, *Probability Surveys*, Vol. 2 (2005) 348-384.
- [Olv74] Olver, F.W., “Asymptotics and Special Functions”, Academic Press, 1974.
- [SS03] Stein, E.M. and R. Sharkarchi, “Complex Analysis”, Princeton University Press, (2003).
- [Wil97] Willard, G., “Calculating Prices and Sensitivities for Path-Independent Derivatives Securities in Multifactor Models”, *The Journal of Derivatives*, Fall 1997, Vol. 5, No. 1: pp. 45-61.

## A Proof of Lemma 3.2

The following result will be useful:

**Lemma A.1** *If  $k(x)$  is  $C^2$  and strictly convex over  $[a, b]$ , then  $m(x) := k(\frac{a+b}{2} - x) + k(\frac{a+b}{2} + x)$  is strictly increasing over  $[0, \frac{b-a}{2}]$ .*

**Proof.**  $m''(x) = k''(\frac{a+b}{2} - x) + k''(\frac{a+b}{2} + x) > 0$ , so  $m'(x)$  is strictly increasing over  $[0, \frac{b-a}{2}]$ . But  $m'(0) = -k'(\frac{a+b}{2}) + k'(\frac{a+b}{2}) = 0$ . The result follows. ■

Recall that  $g(z) = (\log z)^2$ . To simplify notation, we introduce

$$u(z) := \frac{1}{2}g''(z) = \frac{1 - \log z}{z^2}, \quad z > 0.$$

Then we have  $u'(z) = \frac{2 \log z - 3}{z^3}$ ,  $u''(z) = \frac{11 - 6 \log z}{z^4}$ ,  $u(e) = 0$  and  $u(0+) = \infty$ . Moreover,  $u(z) < 0$  if and only if  $z > e$ .

- If  $K \in (0, 2e)$ , then  $u(\frac{1}{2}K) > u(e) = 0$ . Since  $u''(z) > 0$  for all  $z \in (0, e^{\frac{11}{6}}) \supset (0, 2e) \supset (0, K)$ , we know that  $u(z)$  is strictly convex over  $(0, K)$ . Recall that  $\bar{h}_K(z) = g(z) + g(K - z)$ . Then by convexity of  $u$ , we know that

$$\frac{1}{2}\bar{h}_K''(z) = u(z) + u(K - z) \geq 2u(\frac{1}{2}K) > 0. \quad (\text{A-1})$$

Since  $\bar{h}_K(z)$  is strictly convex and  $\bar{h}_K(z) = \bar{h}_K(K - z)$ , there is a unique minimizer of  $\bar{h}_K(z)$  at  $z^* = \frac{1}{2}K$ .

- The case  $K = 2e$  is easily verified.
- If  $K \in (2e, 2e^{\frac{3}{2}}]$ , using that  $u'(K - z) = -\frac{d}{dz}u(K - z) = \frac{-3 + 2 \log(K - z)}{(K - z)^3}$ , we see that  $u(K - z)$  is strictly decreasing for  $z \in (0, K - e^{\frac{3}{2}})$ . Similarly, it can be easily seen that  $u(z)$  is also strictly decreasing for  $z \in (0, K - e^{\frac{3}{2}}) \subset (0, e^{\frac{3}{2}}]$ . Thus  $\frac{1}{2}\bar{h}_K''(z) = u(z) + u(K - z)$  is strictly decreasing for  $z \in (0, K - e^{\frac{3}{2}})$ . Furthermore,  $u(z)$  is strictly convex for all  $z \in [K - e^{\frac{3}{2}}, e^{\frac{3}{2}}] \subset (0, e^{\frac{11}{6}})$ . By Lemma A.1, choosing choose  $a$  and  $b$  such that  $(a + b)/2 = \frac{1}{2}K$  and  $(b - a)/2 = e^{\frac{3}{2}} - K/2$  so  $[a, b] = [K - e^{\frac{3}{2}}, e^{\frac{3}{2}}]$  we know that

$$\frac{1}{2}\bar{h}_K''(\frac{1}{2}K - y) = u(\frac{1}{2}K - y) + u(\frac{1}{2}K + y), \quad (\text{A-2})$$

is strictly increasing for  $y \in [0, e^{\frac{3}{2}} - \frac{1}{2}K]$ . In other words,  $\bar{h}''_K(z)$  is strictly decreasing for  $z \in [K - e^{\frac{3}{2}}, \frac{1}{2}K]$ . Overall, we have proved that  $\bar{h}''_K(z)$  is strictly decreasing for  $z \in (0, \frac{1}{2}K]$ , hence, there is at most one root to  $\bar{h}''_K(z) = 0$  over  $(0, \frac{1}{2}K)$ . By  $\bar{h}''_K(0+) = \infty$  and  $\bar{h}''_K(\frac{1}{2}K) < 0$  we have the existence and uniqueness of the root to  $\bar{h}''_K(z) = 0$  over  $(0, \frac{1}{2}K)$ . Denoting this root by  $y_1$ , then by symmetry,  $\bar{h}_K(z)$  is strictly convex on  $(0, y_1)$ , strictly concave on  $(y_1, K - y_1)$ , and strictly convex on  $(K - y_1, K)$ . This implies that there is exactly one root to  $\bar{h}'_K(z) = 0$  over  $(0, y_1)$ . Otherwise, we would either have at least one root to  $\bar{h}'_K(z) = 0$  over  $(0, y_1)$ , or  $0 = \bar{h}'_K(\frac{1}{2}K) < \bar{h}'_K(y_1) \leq 0$ , which is a contradiction. Denoting this root by  $z^*$ , then we have two minima of  $\bar{h}_K(z)$  at  $z^*$  and  $K - z^*$ .

- If  $K \in (2e^{\frac{3}{2}}, \infty)$ , then using the facts that  $u(z)$  is strictly decreasing for  $z \in (0, e^{\frac{3}{2}}]$ , and that  $u(K - z)$  is strictly decreasing for  $z \in (0, K - e^{\frac{3}{2}}] \supset (0, e^{\frac{3}{2}}]$ , we know that  $\frac{1}{2}\bar{h}''_K(z) = u(z) + u(K - z)$  is strictly decreasing for all  $z \in (0, e^{\frac{3}{2}}] \subsetneq (0, \frac{1}{2}K)$ . Moreover, since  $u(e^{\frac{3}{2}}) < u(e) = 0$  and  $u(K - e^{\frac{3}{2}}) < u(e) = 0$  (since  $K > 2e^{\frac{3}{2}} > e + e^{\frac{3}{2}}$ ), we know that  $\frac{1}{2}\bar{h}''_K(e^{\frac{3}{2}}) < 0$ . But  $\bar{h}''_K(0+) = \infty$ , we know that there is a unique root to  $\bar{h}''_K(z) = 0$  over  $(0, e^{\frac{3}{2}})$ . Finally, for all  $z \in [e^{\frac{3}{2}}, \frac{1}{2}K]$ , we have  $z > e$  and  $K - z > e$ , so  $u(z) < 0$ ,  $u(K - z) < 0$ , and  $\frac{1}{2}\bar{h}''_K(z) < 0$  for all  $z \in [e^{\frac{3}{2}}, \frac{1}{2}K]$ . By the same argument as the last bullet point, we can now establish the existence of two minima at  $z^* \in (0, e^{\frac{3}{2}})$  and  $K - z^*$ .

## B Computing $\mathbb{E}(a_t^{\frac{3}{2}} T_t^{-1})$

The joint density of  $(a_t, T_t)$  can be found in [MY05]. In particular,  $\mathbb{P}(a_t \in da, dT_t \in dI) = \frac{e^{\frac{\pi^2}{2t} - \frac{t}{8}}}{\sqrt{2\pi^3 t}} \frac{1}{I^2 \sqrt{a}} \exp(-\frac{1+a^2}{2I}) \psi_{\frac{a}{I}}(t) da dI$  where  $\psi_r(t) = \int_0^\infty dz e^{-\frac{z^2}{2t} - r \cosh z} \sinh z \sin \frac{\pi z}{t}$  for all  $r, t > 0$ . From (14) of [FZ14] it is known that  $|\psi_r(t)| \leq \frac{1}{r}$ . Thus,

$$\begin{aligned}
\mathbb{E}(a_t^{\frac{3}{2}} T_t^{-1}) &= \int_0^\infty \int_0^\infty a^{\frac{3}{2}} I^{-1} \mathbb{P}(a_t \in da, dT_t \in dI) \leq \frac{e^{\frac{\pi^2}{2t} - \frac{t}{8}}}{\sqrt{2\pi^3 t}} \int_0^\infty \int_0^\infty \frac{a^{\frac{3}{2}}}{I} \frac{1}{I^2 \sqrt{a}} \exp(-\frac{1+a^2}{2I}) \frac{I}{a} da dI \\
&= \frac{e^{\frac{\pi^2}{2t} - \frac{t}{8}}}{\sqrt{2\pi^3 t}} \int_0^\infty da \int_0^\infty \exp(-\frac{1+a^2}{2I}) \frac{dI}{I^2} \\
&= \frac{e^{\frac{\pi^2}{2t} - \frac{t}{8}}}{\sqrt{2\pi^3 t}} \int_0^\infty \frac{2}{1+a^2} da \\
&= \frac{e^{\frac{\pi^2}{2t} - \frac{t}{8}}}{\sqrt{2\pi t}}.
\end{aligned}$$