

Didn't find what you were looking for? Click [Questions & Answers](#) to ask a question. Good answers await.

LinuxBSDos.com

Latest Reviews & Tutorials

[How to install Linux Mint 11 on a btrfs file system](#)

May 30, 2011

Like [Ubuntu 11.04](#) on which it is based, Linux Mint 11 has support for btrfs, a modern journaling file system features that are not available on the default file system on Linux. For example, with btrfs, you can snapshots Subvolumes...

[Dual-booting Windows 7 and Ubuntu 10.10](#)

[Tutorials/Tips](#), [ubuntu](#) | January 28, 2011 3:31 pm

[Previous](#) « 1 2 3 » [Next](#)

 *Featured Download*

**FREE Active
Directory-based
single sign-on to
Linux and Mac**

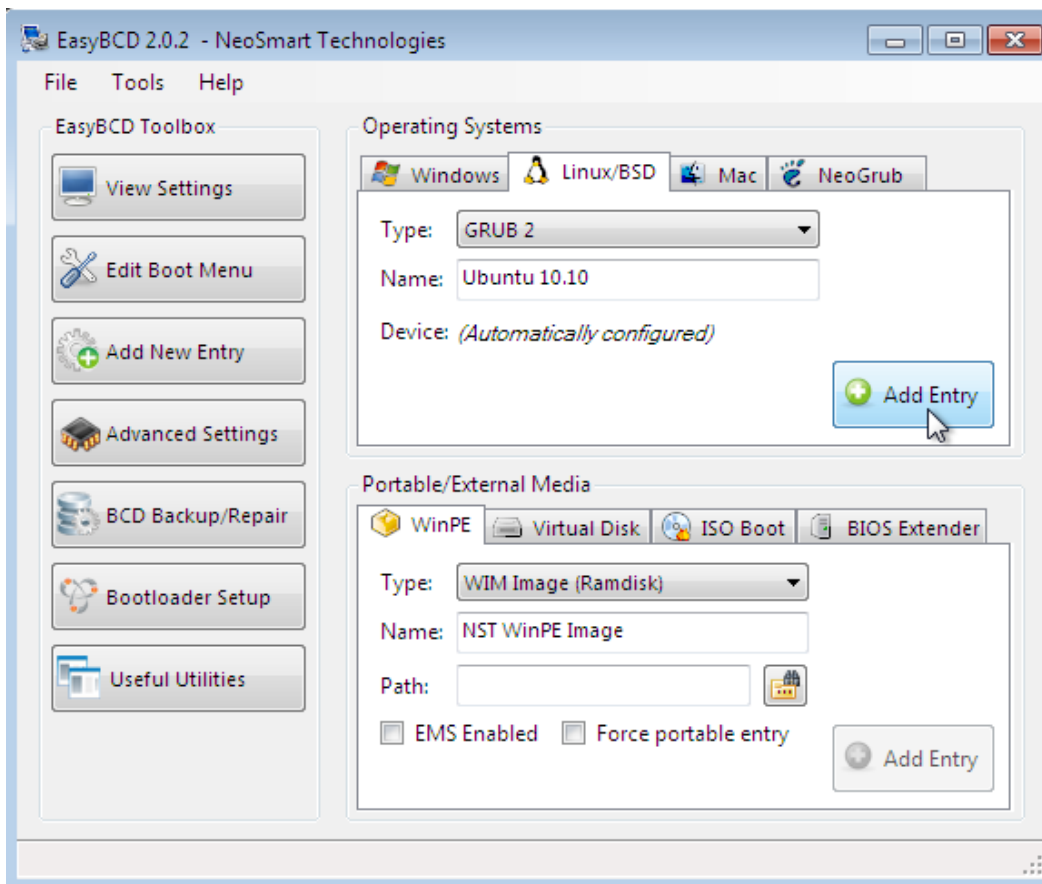
The #1 Choice for Active
Directory Integration

 Centrify

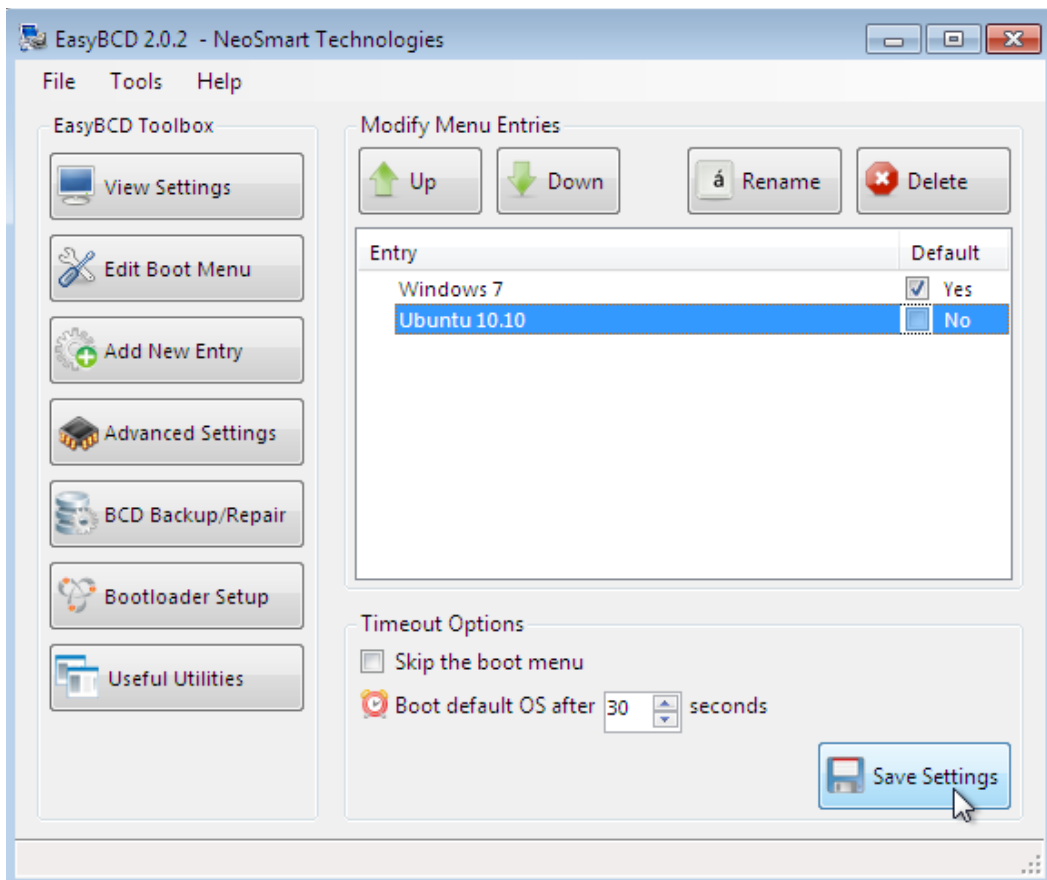
[Download Now](#) ▶



▶ On the *Add New Entry* tab, click on the *Linux/BSD* tab. For *Type*, select "GRUB 2" from the menu. That is all you need to change. Click on *Add Entry* button, then click on the *Edit Boot Menu* tab to view your handiwork.



You should see this. You may change the boot order if you wish. Exit EasyBCD, then reboot.



Featured Download

**FREE Active
Directory-based
single sign-on to
Linux and Mac**

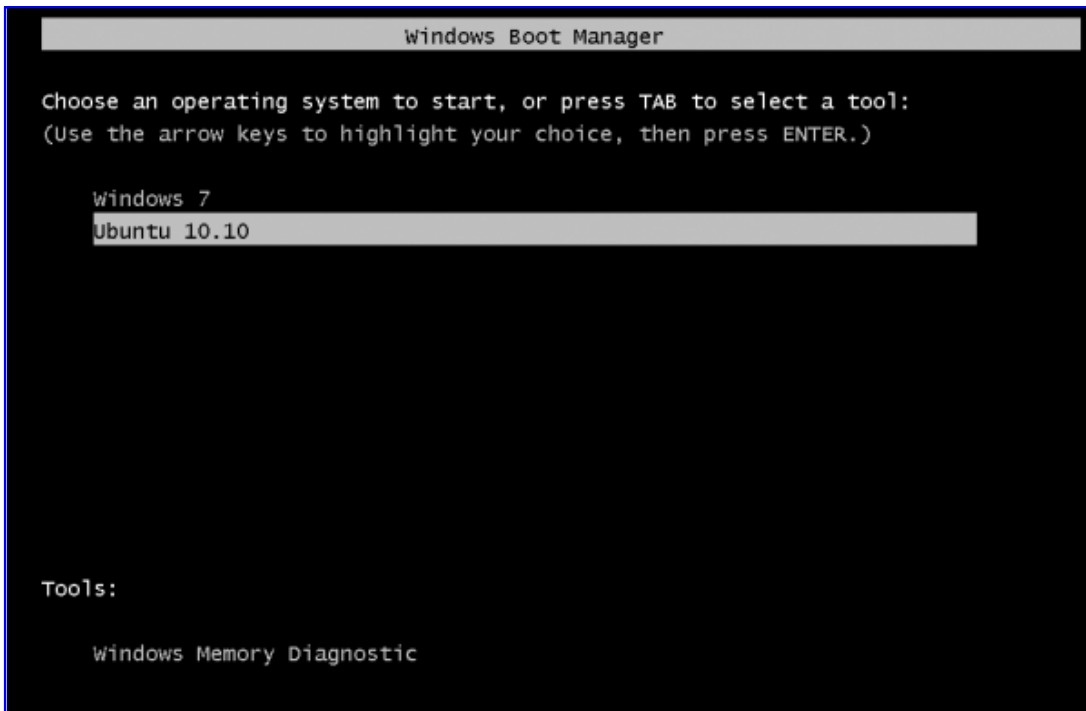
The #1 Choice for Active
Directory Integration

 Centrify

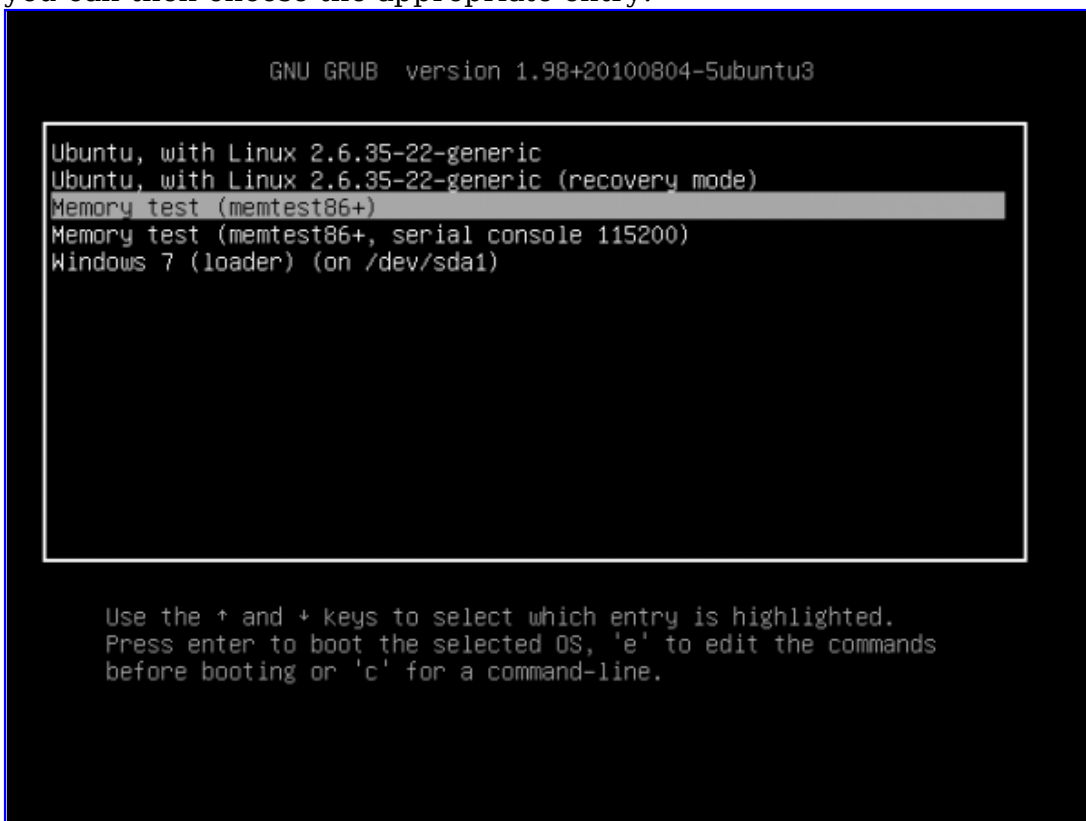
Download Now 



If you followed the instructions correctly you should see the Windows Boot Menu. Boot into Ubuntu.



You will then be presented with the GRUB menu. I like having it like this because if you decide that you want to boot into Windows instead of Ubuntu, you can then choose the appropriate entry.



I hope this guide has been helpful. If you need further assistance, feel

free to ask for help at the [forum](#). It is a better environment for discussing and resolving issues than the commenting system. You can have quality articles like this delivered automatically to your feed reader or inbox by subscribing via [RSS](#) or [email](#).

- [Bookmark on Delicious](#)
- [Digg this post](#)
- [Recommend on Facebook](#)
- [Share on FriendFeed](#)
- [Mixx it up](#)
- [Share on netvibes](#)
- [share via Reddit](#)
- [Share on identica](#)
- [Share with Stumblers](#)
- [Share on technorati](#)
- [Tweet about it](#)
- [Buzz it up](#)
- [Tell a friend](#)

[Previous](#)« [1](#) [2](#) [3](#) »[Next](#)

Pages: [1](#) [2](#) [3](#)

Tags: [dual-booting](#)

Microsoft System Centre www.bluechip.uk.com

An alternative to the virtual desktop apply for free consultation

AdChoices 

We Recommend

- [How to dual-boot Windows 7 and Ubuntu 11.04](#)
- [Dual-booting Linux Mint 10 KDE and Windows 7](#)
- [How to dual-boot Pardus 2011 and Windows 7](#)
- [How to dual-boot Ubuntu 10.10 and Windows 7](#)
- [How to dual-boot Fedora 15 and Windows 7](#)
- [How to dual-boot Linux Mint 10 and Windows 7](#)
- [How to dual-boot Linux Mint 10 or Ubuntu 10.10 and Windows 7 on a computer with two hard drives](#)
- [Install Ubuntu 11.04 on external hard disk](#)
- [Manual disk partitioning guide for Ubuntu 11.04](#)
- [How to dual-boot Debian 6 and Windows 7](#)

Posts From The Same Category:

- [Manual disk partitioning guide for Ubuntu 11.04](#)
- [Install Elisa Media Center on Linux Mint 6](#)
- [How to install Nanny on Mint 9 and Ubuntu 10.04](#)
- [Fedora 13 btrfs installation guide](#)
- [5 netbook-optimized desktop interfaces for Linux and BSD distributions](#)
- [Disk partitioning guide for Linux Mint Debian](#)
- [How to enhance the physical security posture of your Linux/BSD-powered PC](#)
- [Manual disk partitioning guide for Kubuntu 11.04](#)
- [OpenOffice.org: The Need for Style](#)
- [Mandriva Linux 2009 Firewall](#)

Questions & Answers

Good Questions Beget Good Answers

Hola! Looking for an answer to a question but did not find it? Then surf on over to the [Questions & Answers](#) section. It's a brand new addition to our site, and we are waiting just to answer your question(s).

25 Comments



1. [▲](#) [◀](#) [JohnPaul Adamovsky](#) says:
[June 24, 2011 at 4:21 pm](#)

Hey Man,

Back in February, I left the second comment on this excellent guide, and it seems like its popularity has been gaining momentum since then.

I ran into a small problem recently:

Got some additional RAM, and my workstation began to crash in an arbitrary manner, when it used to be airtight and ironclad.

Used memtest86+ on the Grub2 boot-loader to determine which RAM sticks were causing the problem, and after I hard reset the machine a couple of times, the Ubuntu boot menu stopped working the way it used to.

Found the bad sticks, and took them out, my machine is Mr. Dependable again, but with 4 instead on 8 gigs RAM.

Now this happens when I choose Ubuntu 11.04 from the Windows boot-loader menu:

Try (hd0,0): NTFS5 No Ang0

.... a minute or two later Grub2 pops up and everything looks normal.

The partition layout appears to be the same, so:

What happened?

Where is the problem located?

How do I get it back to normal?

Thank you, and all the very best,

JohnPaul Adamovsky

[Reply](#)

2.  *Gokul* says:

[June 23, 2011 at 4:01 pm](#)

Very nice walkthrough over dual booting windows 7 and ubuntu. Much better than the ubuntu documentation itself.

[Reply](#)



3. *xuexue* says:

[May 25, 2011 at 1:18 am](#)

Hi,

Thanks for the guide.

Could you point out how to bring out the first install Allocate Drive Space window?

Sorry for the basic questions.

Regards,

xuexue

[Reply](#)



- o *finid* says:

[May 25, 2011 at 2:07 am](#)

When you boot the computer using the installation disc, and keep clicking *Forward*, you will get to that window. I think it is 3 or 4 windows into the installation.

[Reply](#)

[« Older Comments](#)

Leave a Reply

Name (required)

Mail (will not be published) (required)

Website



Add Reply

Notify me of followup comments via e-mail

Trackbacks

1. [Tweets that mention Dual-booting Windows 7 and Ubuntu 10.10 -- Topsy.com](#)
2. [Links 29/1/2011: KDE SC 4.6 Reviewed, Linux.conf.au 2012 Planned to Reach Ballarat University | Techrights](#)
3. [Boot problem - Digit Technology Discussion Forum](#)

Ads



[Q & A on LinuxBSDos](#)

- [Full disk encryption for Linux Mint](#)
- [Mandriva Desktop 2011 PowerSync Client](#)
- [Memory Requirements for Fedora Installation](#)
- [Mandriva Desktop 2011](#)
- [GParted after setting up dual boot](#)
- [How much hard drive space on Fedora 14](#)
- [Encrypting disk on Fedora after installation](#)
- [Installing Windows 7 after Fedora 15](#)
- [Installing Linux keeping Windows 7 boot loader](#)

- [Protect Your Data From Illegal Law Enforcement Searches](#)

Got a Question?

Welcome! Looking for the answer to your question but did not find it? Then surf on over to our [Q & A section](#) and pose your question directly to our gurus. It's a brand new addition to our site, and we are waiting just to answer your question(s).

Subscribe







Subscribe to [RSS](#) or enter you email to receive newsletter for news, articles, and updates about what's new.

enter your ema

Most Recent Posts

- [Sabayon 6 KDE review](#)
- [How to dual-boot Fedora 15 and Windows 7](#)
- [Install Mageia 1 on an encrypted LVM file system](#)
- [Fedora 15 KDE review](#)
- [Install Mageia 1 on an encrypted btrfs file system](#)
- [Dual-boot Fedora 15 and Ubuntu 11.04 with either side on an LVM partitioning scheme](#)
- [Mageia 1.0 review](#)
- [Dual-boot Linux Mint 11 and Windows 7](#)
- [Linux Mint 11 review](#)
- [How to replace GRUB with BURG on Linux Mint 11](#)

Recent Comments

-  [finid](#): Considering that the boot partition will have to be formatted during installation, I don't...
-  [finid](#): The same Swap? Yes. See ...
-  [sd azli](#): can we use the same partition for boot loader, as it like the two of linux sharing the par...
-  [Sceptic](#): I still don't see how all this crypto is going to protect you from someone with a \$5 hamme...

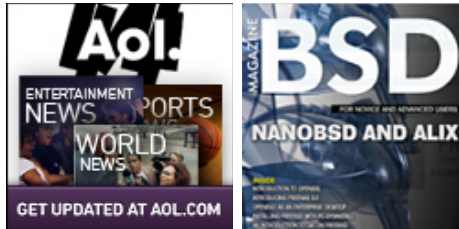


[Finalzone](#): You are right, DxSepley. Wav is the generic format for Audio CD....

Sponsored Link Ads

- [GIA cell phone chips](#)

Friends



Desktop Distros

- [ALT Linux](#)
- [CentOS](#)
- [Debian](#)
- [Fedora](#)
- [Foresight](#)
- [g OS](#)
- [gNewSense](#)
- [Hymera Open](#)
- [Knoppix](#)
- [Linpus](#)
- [Mandriva](#)
- [Mint](#)
- [OzOS](#)
- [Pardus](#)
- [Parsix](#)
- [PCLinuxOS](#)
- [Sabayon](#)
- [StartCom](#)
- [Ubuntu](#)
- [Vine Linux](#)
- [Zenwalk](#)

Tablet/Mobile

- [Android](#)
- [Bada](#)
- [LiMo](#)
- [MeeGo](#)

- [Symbian](#)

System Admin

- [Clonezilla](#)
- [GRML](#)
- [Parted Magic](#)
- [SystemRescueCd](#)

NAS/SAN

- [FreeNAS](#)
- [Openfiler](#)

BSD Distros

- [DesktopBSD](#)
- [FreeBSD](#)
- [MirOS BSD](#)
- [NetBSD](#)
- [OpenBSD](#)
- [PC-BSD](#)
- [TrueBSD](#)

Firewall/Router

- [Astaro Security Gateway](#)
- [BackTrack](#)
- [ClearOS](#)
- [Devil-Linux](#)
- [Endian Firewall Community](#)
- [EnGarde Secure Linux](#)
- [Gibraltar](#)
- [IPCop](#)
- [IPFire](#)
- [NuFW.Live](#)
- [pfSense](#)
- [SmoothWall Express](#)
- [Untangle Network Gateway](#)
- [Vyatta](#)
- [XORP](#)
- [Zentyal](#)
- [Zeroshell](#)

Source Distros

- [Gentoo](#)
- [Lunar](#)

Telphony/IP-PBX

- [AskoziaPBX](#)
- [AsteriskNOW](#)
- [Elastix](#)
- [trixbox](#)



Looking for a Job?

[Jobs @ LinuxBSDos.com](#)

[Linux Systems Developer](#)

Chicago, IL - Cleversafe

[Linux Kernel Device Driver Developer Needed For Upcoming Positions](#)

Hillsboro, OR - Kelly IT Resources

[Senior Embedded Linux Kernel Software Engineer](#)

Santa Clara, CA - Seamicro

[Linux Kernel Engineer, Embedded Software Engineer, Linux, BSD](#)

Sunnyvale, CA - Cybercoders

[Sr. Linux Kernel Developer](#)

Sunnyvale, CA - Chelsio Communications

[Linux Kernel Developers](#)

Sunnyvale, CA - Chelsio Communications

[Performance Software Engineer - Linux BSD Kernel Device Driver](#)

Hillsboro, OR - Volt Information Sciences

[See All Jobs](#)

[Post a job for \\$50](#)

<input type="text" value="keywords"/>	<input type="text" value="location"/>	<input type="button" value="Go"/>
---------------------------------------	---------------------------------------	-----------------------------------

Jobs by [SimplyHired](#)

[+ Get Widget](#)

Categories

Select category

Archives

Select Month

Recommended

- [A Perfect Linux or BSD desktop distribution](#)
- [Free software without the freedom?](#)
- [The Free Software Definition](#)
- [The best Linux, BSD firewall and router distributions](#)
- [In search of the perfect Linux and BSD desktop distribution](#)
- [Linux Logical Volume Manager](#)
- [The Benefits of Using Linux Logical Volume Manager](#)

Recently Popular

- [Linux Mint 11 review](#)
- [Ubuntu 11.04 review](#)
- [Mageia 1.0 review](#)
- [How to dual-boot...](#)
- [Dual-boot Linux...](#)
- [Manual disk...](#)
- [Fedora 15 LXDE...](#)
- [How to dual-boot...](#)
- [PC-BSD 8.2 review](#)
- [Ubuntu 10.10 manual...](#)

[Questions & A](#)

- [Full disk encryption for Linux Mint](#)
- [Mandriva Desktop 2011 PowerSync Client](#)
- [Memory Requirements for Fedora Installation](#)
- [Mandriva Desktop 2011](#)
- [GParted after setting up dual boot](#)
- [How much hard drive space on Fedora 14](#)
- [Encrypting disk on Fedora after installation](#)
- [Installing Windows 7 after Fedora 15](#)
- [Installing Linux keeping Windows 7 boot loader](#)
- [Protect Your Data From Illegal Law Enforcement Searches](#)

Copyright © 2011 — [LinuxBSDos.com](http://www.linuxbsdos.com). All Rights Reserved.
IDG Tech Network Logo